

Filamin A Phospho (pS1458)

Rabbit Monoclonal Antibody | Product Data Sheet

Catalog# 2330-1

Quantity: 100ul

Clone ID: EP2309Y

Species Cross-reactivity* + Human - Mouse - Rat

Applications: + WB + IHC + ICC - IP - FC

Lot #: Please refer to vial

Molecular Wt.: 280 kDa

UniProt ID: P21333

Background: Filamins are a family of high molecular mass cytoskeletal proteins that organize filamentous actin in networks and stress fibers. Recently it has become clear that filamins anchor various transmembrane proteins to the actin cytoskeleton and provide a scaffold for a wide range of cytoplasmic signaling proteins (1). Actin-binding protein (Filamin A) is a ubiquitous dimeric actin cross-linking phosphoprotein of peripheral cytoplasm, where it promotes orthogonal branching of actin filaments and links actin filaments to membrane glycoproteins (2). The actin-binding domain is near the amino-terminus of the subunit where the amino acid sequence is similar to other actin filament binding proteins, including alpha-actinin, beta-spectrin, dystrophin, and Dictyostelium abp-120. Detection of Filamin A /Fh1 proteins suggests that these presenilin-interacting proteins may be involved in the development of Alzheimer's disease and that interactions between presenilins and Filamin A /Fh1 may be functionally significant (3).

Specificity: A phospho specific peptide corresponding to residues surrounding serine 1458 of human Filamin A was used as an immunogen. This antibody detects Filamin A phosphorylated at serine 1458.

Storage Condition and Buffer: Store at -20 °C. Buffer: Antibody buffer, sodium azide, glycerol, and BSA. Stable for 12 months from date of receipt.

Recommended Dilutions:

WB: 1:2500 - 5000

IHC: 1:50 - 100

ICC: 1:50 - 100

Background References:

1. van der Flier A. *Biochim Biophys* 1538(2):99-117, 2001
2. Gorlin JB, et al. *J Cell Biol* 111(3):1089-105, 1990
3. Zhang W, et al. *J Neurosci* 18(3):914-22, 1998

*Cross reactivity determined by western blot only.

Product QC'd by:

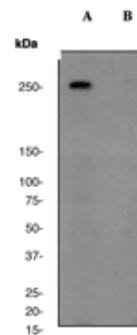


Fig 1. A. Western blot analysis on HeLa cell lysates using anti-Phospho-Filamin A (pS1458) RabMAb (cat. #2330-1), 1:5000 dilution. Cells were either (A) untreated (B) treated with AP

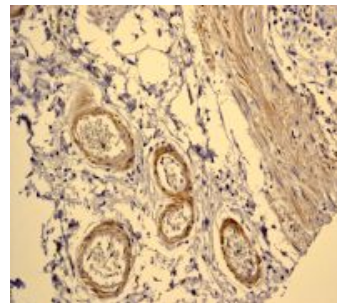


Fig 2. B. Immunohistochemical analysis of paraffin-embedded human stomach using Phospho-specific anti-Filamin A RabMAb (cat. # 2330-1)

For research use only. Not for use in diagnostic or therapeutic applications.

This product was manufactured under U.S. Patent No. 5,675,063. For a complete list of protocols and available related products, please visit www.epitomics.com
Epitomics, Inc., 863 Mitten Road, Suite 103 Burlingame, California 94010-1303

Rev. 052110.12