

## CD11b/ITAM

Rabbit Monoclonal Antibody | Product Data Sheet

Catalog# 1936-1

**Quantity:** 100ul

**Clone ID:** EP1345Y

**Species Cross-reactivity\*** + Human - Mouse - Rat

**Applications:** + WB + IHC + ICC + IP + FC

**Lot #:** Please refer to vial

**Molecular Wt.:** 170 kDa

**UniProt ID:** P11215

**Background:** Integrin alpha-M (ITAM, ITGAM, CD11b, MAC-1 alpha subunit, CR3 alpha chain) is the alpha subunit of ITAM/beta-2 complex (CD11b/CD18, Mac-1), a leukocyte adhesion heterodimeric glycoprotein (1). ITAM belongs to integrin alpha chain family and it is predominately presented in human myeloid cells, NK1 cells, monocytes, and granulocytes. ITAM/beta-2 complex is a receptor for fibrinogen (binding to P1 and P1 peptides of gamma chain), factor X, and ICAM1. ITAM/beta-2 is implicated in adhesive interactions of monocytes, macrophages, and granulocytes. It is also linked to mediation of complement-coated particle uptake (2).

**Specificity:** A synthetic peptide corresponding to C-terminus of human CD11b/ITAM protein was used as immunogen

**Storage Condition and Buffer:** Store at -20 °C. Buffer: Antibody buffer, sodium azide, glycerol, and BSA. Stable for 12 months from date of receipt.

**Recommended Dilutions:**

**WB:** 1:1,000 - 10,000

**IHC:** 1:100-1:250

**ICC:** 1:100-1:250


**IP:** 1:80

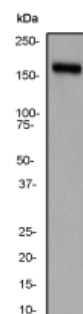
**FC:** 1:20

**Background References:**

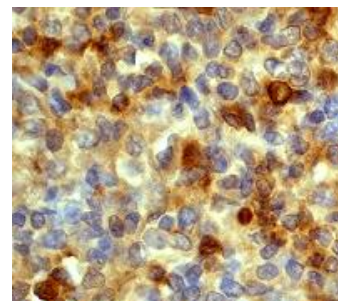
1. Corbi AL et al. J. Biol. Chem. 263(25):12403-12411, 1
2. Barden A et al. Clin Sci (Lond). 92(1):37-44m 1997.

\*Cross reactivity determined by western blot only.

Product QC'd by: 



**Fig 1. A.** Western blot analysis on TF-1 cell lysate using anti-CD11b/ITAM RabMAb (cat. #1936-1).



**Fig 2. B.** Immunohistochemical analysis of paraffin-embedded human spleen using anti-ITAM RabMAb (cat. # 1936-1).

For research use only. Not for use in diagnostic or therapeutic applications.

This product was manufactured under U.S. Patent No. 5,675,063. For a complete list of protocols and available related products, please visit [www.epitomics.com](http://www.epitomics.com)  
Epitomics, Inc., 863 Mitten Road, Suite 103 Burlingame, California 94010-1303