

## Adducin alpha (C-term)

Rabbit Monoclonal Antibody | Product Data Sheet

Catalog# 1706-1

**Quantity:** 100ul

**Clone ID:** EP734Y

**Species Cross-reactivity\*** + Human + Mouse + Rat

**Applications:** + WB + IHC + ICC - IP - FC

**Lot #:** Please refer to vial

**Molecular Wt.:** 130 kDa

**UniProt ID:** P35611

**Background:** Adducin is a membrane skeletal protein that binds to actin filaments (F-actin) and promotes the association of spectrin with F-actin to form a spectrin-actin meshwork beneath plasma membranes (1-2). Adducin is a heterodimeric protein that consists of related subunits; Alpha and Beta, or Alpha and Gamma subunits (3). Adducin binds with high affinity to Ca(2+)/calmodulin and is a substrate for protein kinase C (PKC), and protein kinase A (PKA) (4). Phosphorylation of adducing alpha by Rho-kinase at Thr445 and Thr480 enhances the F-actin-binding activity of adducing alpha (5).

**Specificity:** A synthetic peptide corresponding to residues in the C-term of human Adducin was used as immunogen.

**Storage Condition and Buffer:** Store at -20 °C. Buffer: Antibody buffer, sodium azide, glycerol, and BSA. Stable for 12 months from date of receipt.

**Recommended Dilutions:**

**WB:** 1:5,000-50,000

**IHC:** 1:250-500

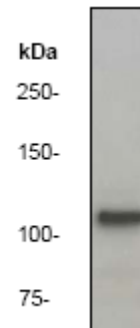
**ICC:** 1:250-500

**Background References:**

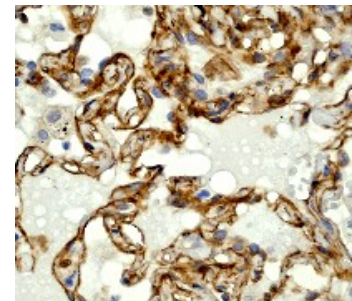
1. Gardner, K.; Bennett, V. : J. Biol. Chem. 261: 1339-1348, 1986.
2. Kuhlman, P.A., C.A. Hughes, V. Bennett, and V.M. Fowler. 1996. J. Biol. Chem. 271: 7986-7991
3. Dong, L., C. Chapline, B. Mousseau, L. Fowler, K. Ramsay, J.L. Stevens, and S. Jaken. 1995. J. Biol. Chem. 270: 25534-25540
4. Palfrey, H. C., Waseem, A. (1985) J. Biol. Chem. 260, 16021-16029
5. Fukata et al. J. Cell Biol., Volume 145, Number 2, April 19, 1999 347-361

\*Mouse cross reactivity tested by western blot and IHC


Rat cross reactivity tested by western blot only



**Fig 1. A.** Western blot analysis on Hela cell lysate using anti-K562 RabMAb (cat. # 1706-1), dilution 1:50,000.



**Fig 2. B.** Immunohistochemical analysis of paraffin-embedded human lung using anti-Adducin (C-term) RabMAb (cat. # 1706-1).

Product QC'd by: 

For research use only. Not for use in diagnostic or therapeutic applications.

This product was manufactured under U.S. Patent No. 5,675,063. For a complete list of protocols and available related products, please visit [www.epitomics.com](http://www.epitomics.com)  
Epitomics, Inc., 863 Mitten Road, Suite 103 Burlingame, California 94010-1303