

CD22 Phospho (pY762)

Rabbit Monoclonal Antibody | Product Data Sheet

Catalog# 1778-1

Quantity: 100ul

Clone ID: EP727Y

Species Cross-reactivity* + Human - Mouse - Rat

Applications: + WB - IHC - ICC + IP - FC

Lot #: Please refer to vial

Molecular Wt.: 150 kDa

UniProt ID: P20273

Background: CD22, a negative regulator of B cell signaling, belongs to the sialoadhesin family of receptors that preferentially binds to Alpha2-6-linked sialic acid on glycoproteins (1-2). CD22 is known to interact with the B cell antigen receptor (BCR) (3) and the tyrosine phosphatase SHP1. Tyrosine phosphorylation of CD22 leads to the recruitment of multiple intracellular Src homology 2 (SH2) domain-containing effector molecules, including phospholipase C (Gamma) and Syk, which are important for triggering Ca²⁺ influx, as well as PI 3-kinase and Grb2 (4-5).

Specificity: A synthetic phospho-peptide corresponding to residues surrounding Tyrosine 822 of human CD22 was used as immunogen. The antibody will detect CD22 phosphorylation on Tyrosine 822. This antibody is predicted to detect splice isoform 2 based on sequence homology.

Storage Condition and Buffer: Store at -20 °C. Buffer: Antibody buffer, sodium azide, glycerol, and BSA. Stable for 12 months from date of receipt.

Recommended Dilutions:

WB: 1:1,000 - 10,000

IP: 1:50

Background References:

1. Wilson GL, et al. J. Immun. (150):5013-5024, 1993.
2. Nitschke LH, et al. Scand. J. Immunol. (53):227, 2001.
3. Tedder TF, et al. Annu. Rev. Immunol. (15):481, 1997
4. Yohannan JJ, et al. J. Biol. Chem. (274):18769, 1999
5. Otipoby KL, et al, J. Biol. Chem. (276):44315, 2001

*Cross reactivity determined by western blot only.

Product QC'd by:

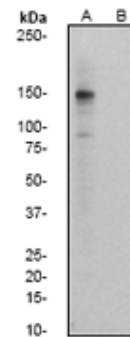


Fig 1. A. Western blot analysis on Raji cell lysates using anti-Phospho-CD22 (pY762) RabMAb (cat. #1778-1), 1:5000 dilution. Cells were either (A) treated with Pervanadate or (B) untreated.

For research use only. Not for use in diagnostic or therapeutic applications.

This product was manufactured under U.S. Patent No. 5,675,063. For a complete list of protocols and available related products, please visit www.epitomics.com
Epitomics, Inc., 863 Mitten Road, Suite 103 Burlingame, California 94010-1303