

14-3-3 b/a (C-term)

Rabbit Monoclonal Antibody | Product Data Sheet

Catalog# 1062-1

Quantity: 100ul

Clone ID: Y62

Species Cross-reactivity* + Human + Mouse + Rat

Applications: + WB + IHC + ICC + IP + FC

Lot #: Please refer to vial

Molecular Wt.: 30 kDa

UniProt ID: P31946

Background: The 14-3-3 proteins are a family of proteins involved in the regulation of apoptosis, mitogenic signaling and cell-cycle checkpoints (1). The 14-3-3 proteins are thought to be key regulators of signal transduction events mediated through their binding to serine-phosphorylated proteins (2,3). Through binding Bad, 14-3-3 prevents apoptosis by sequestering Bad to the cytosol (3).

Specificity: A synthetic peptide corresponding to C-terminal residues of human 14-3-3 b/a was used as immunogen.

Storage Condition and Buffer: Store at -20 °C. Buffer: Antibody buffer, sodium azide, glycerol, and BSA. Stable for 12 months from date of receipt.

Recommended Dilutions:

WB: 1:1,000

IHC: 1:500

ICC: 1:500

IP: 1:40

FC: 1:40

Background References:

1. Fu, H., et al. 14-3-3 proteins: structure, function, and regulation. *Ann. Rev. Pharmacol. Toxicol.* 40: 617
2. Muslin, A.J. et al. Interaction of 14-3-3 with Signaling Proteins Is Mediated by the Recognition of Phosphoserine. *Cell* 84: 889
3. Zha, J. et al. Serine Phosphorylation of Death Agonist BAD in Response to Survival Factor Results in Binding to 14-3-3 Not BCL-XL. *Cell* 87: 619

*Cross reactivity determined by western blot only.

Product QC'd by:

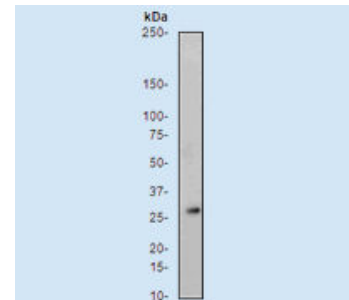


Fig 1. A. Western blot analysis on HeLa cell lysate using anti-14-3-3 b/a (C-term) RabMAb (cat. #1062-1), dilution 1:1,000.

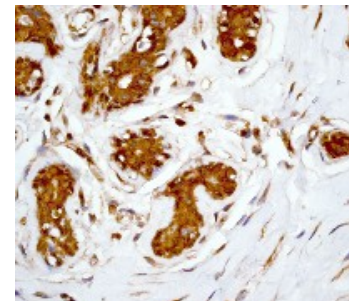


Fig 2. B. Immunohistochemical analysis of paraffin-embedded breast tissue anti-14-3-3 b/a (C-term) RabMAb (cat. #1062-1).

For research use only. Not for use in diagnostic or therapeutic applications.

This product was manufactured under U.S. Patent No. 5,675,063. For a complete list of protocols and available related products, please visit www.epitomics.com
Epitomics, Inc., 863 Mitten Road, Suite 103 Burlingame, California 94010-1303