

Calretinin

Rabbit Monoclonal Antibody | Product Data Sheet

Catalog# 2449-1

Quantity: 100ul

Clone ID: EPR1798(I)

Species Cross-reactivity* + Human + Mouse + Rat

Applications: + WB - IHC - ICC + IP - FC

Lot #: Please refer to vial

Molecular Wt.: 29 kDa

UniProt ID: P22676

Background: Calretinin (CAB29, calbindin 2) is a calcium binding protein that belongs to the calbindin family. It is mainly found in neuronal tissue, highly expressed in auditory neurons. It has been implicated as a calcium buffer, calcium sensor, and regulator of apoptosis (1). Calretinin is considered a specific marker of mesothelial cells; it is the only marker that has can distinguish between sarcomatoid mesotheliomas and sarcomatoid renal cell carcinomas (2). It is widely used in a panel of markers for distinguishing mesothelioma from adenocarcinoma. Along with calretinin, the panel includes E-cadherin, CEA, and cytokeratin 5/6 (3).

Specificity: A synthetic peptide corresponding to residues near the N-terminus of human Calretinin was used as an immogen.

Storage Condition and Buffer: Store at -20 °C. Buffer: Antibody buffer, sodium azide, glycerol, and BSA. Stable for 12 months from date of receipt.

Recommended Dilutions:

WB: 1:1,000 - 5,000

IP: 1:50

Background References:

1. Plattelli A et al. J Endocl 29(6):394-396, 2003
2. Ordonez NG et al. Hum Pathol. 35(6):697-710, 2004
3. Ordonez NG et al. Hum Pathol. 30(3):313-23. 1999

*Cross reactivity determined by western blot only.

Product QC'd by:

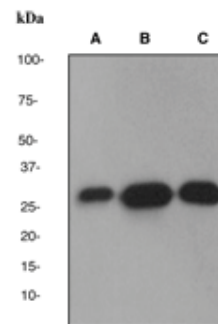


Fig 1. A. Western blot analysis on (A) fetal brain (B) mouse brain and (C) rat brain lysate using anti-Calretinin RabMAb (cat. #2449-1), dilution 1:5,000.

For research use only. Not for use in diagnostic or therapeutic applications.

This product was manufactured under U.S. Patent No. 5,675,063. For a complete list of protocols and available related products, please visit www.epitomics.com
Epitomics, Inc., 863 Mitten Road, Suite 103 Burlingame, California 94010-1303