

**Calretinin Rabbit Monoclonal Antibody
 Product Data Sheet**

Catalog # 4205-1

Clone ID: SP13 **Lot #:** Please refer to vial
Quantity: 100 µl
Type: Rabbit Monoclonal IgG
Species Cross-reactivity: + Human + Mouse + Rat
Applications: WB + IHC n/d ICC n/d Flow Cytometry IP
Molecular Wt.: 31.5 kDa
UniProt ID: P22676

Background: Calretinin (CAB29, calbindin 2) is a calcium binding protein that belongs to calbindin family. It is mainly found in neuronal tissue, high expressed in auditory neurons. It has been implicated in as a calcium buffer, calcium sensor, and as a regulator of apoptosis (1). Calretinin is considered as a specific marker of mesothelial cells; it is the only marker that has the utility in distinguishing between sarcomatoid mesotheliomas and sarcomatoid renal cell carcinomas (2). It is widely used in the panel of makers for distinguishing mesothelioma from adenocarcinoma. Along with calretinin, the panel includes E-cadherin, CEA, and cytokeratin 5/6 (3).

Specificity: Recombinant full length mouse calretinin protein.

Storage Conditions: Store at 2-8 °C. Buffer: Tissue culture supernatant with 0.1% sodium azide and 0.05% BSA. Stable for 12 months from the date of receipt.

Recommended Dilutions:

IHC: 1:100-1:200

Please visit www.epitomics.com for recommended protocols

Background References:

1. Plattelli A et al. J Endocr. 29(6):394-396, 2003.
2. Ordonez NG et al. Hum Pathol. 35(6):697-710, 2004.
3. Ordonez NG et al. Hum Pathol. 30(3):313-23. 1999.

Positive Control: Mesothelioma
Staining Pattern: Cytoplasmic

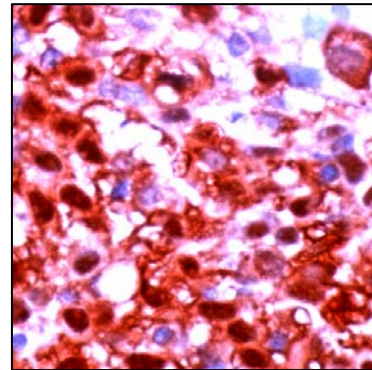


Fig 1. Immunohistochemical staining of paraffin-embedded Human mesothelioma stained with anti-Calretinin RabMAb (Cat. #4205-1)

Related Products:

Antigen	Clone	Catalog #
Cytokeratin 5 (C-term)	EP1601Y	1988-1
E-Cadherin	EP700Y	1702-1
CD20	EP459Y	1632-1
ErbB2/HER2 (C-term)	V2W	1148-1

Product QC'd by: _____

For research use only. Not for use in diagnostic or therapeutic applications.

This product was manufactured under U.S. Patent No. 5,675,063. For a complete list of protocols and available related products, please visit us at www.epitomics.com.