

**CD8 Rabbit Monoclonal Antibody
 Product Data Sheet**

Catalog # 2519-1

Clone ID: EP1150 Lot #: Please refer to vial
 Quantity: 100 uL
 Type: Rabbit Monoclonal IgG
 Species Cross-reactivity: Human Mouse Rat
 Applications: WB IHC ICC Flow Cytometry IP
 Molecular Wt.: 32 kDa
 UniProt ID: P01732

Background: The T cell coreceptor CD8 is a cell-surface glycoprotein expressed either as a disulfide-linked homodimer of two CD8 alpha monomers, or a heterodimer of CD8 alpha and CD8 beta. These receptors interact with ligands, such as major histocompatibility complex (MHC) class I, on the outside of the cell, with proteins inside the cell, such as the tyrosine kinase p56lck, and possibly with proteins on the same cell-surface (1). CD8 plays an important role in T cell development in the thymus and T cell activation in the periphery (2).

Specificity: A synthetic peptide corresponding to residues near the C-terminus of human CD8 Alpha chain was used as an immunogen.

Storage Conditions: Store at -20 °C. Buffer: 50 mM Tris-Glycine (pH 7.4), 0.15 M NaCl, 40% Glycerol, 0.01% sodium azide and 0.05% BSA. Stable for 12 months from date of receipt.

Recommended Dilutions:

WB: 1:1,000 - 5,000
 IHC: 1:250 – 500
 ICC: 1:100 – 250
 FC: 1:40
 IP: 1:10

Please visit www.epitomics.com for recommended protocols

Background References:

- Devine L, et al. Immunol Res, 19(2-3):201-10, 1999.
- Wong, JS, et al. J Immunol 171:867-874, 2003

Related Products:

Antigen	Clone	Catalog #
IL-15	EP433Y	1657-1
TNF-alpha	polyclonal	1790-1

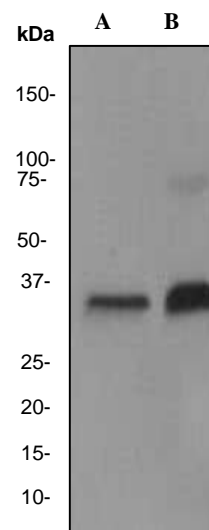


Fig 1. Western blot analysis on A) MOLT-4, B) Jurkat cell lysates using anti-CD8 RabMAb (cat. # 2519-1).

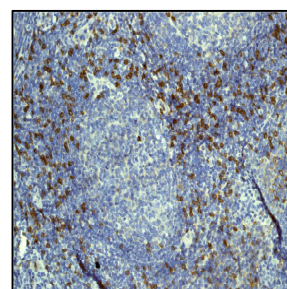


Fig 2. Immunohistochemical analysis of paraffin-embedded human tonsil tissue using anti-CD8 RabMAb (cat. # 2519-1).

Product QC'd by: 

For research use only. Not for use in diagnostic or therapeutic applications.

This product was manufactured under U.S. Patent No. 5,675,063. For a complete list of protocols and available related products, please visit us at www.epitomics.com.

Epitomics, Inc., 863 Mitten Road, Suite 103 Burlingame, California 94010-1303

Rev. A/0609/SML