

**Ferritin (heavy chain) Rabbit Monoclonal Antibody  
 Product Data Sheet**

**Catalog # 2444-1**

Clone ID: EPR3005Y      Lot #: *Please refer to vial*  
 Quantity: 100ul  
 Type: Rabbit Monoclonal IgG  
 Species Cross-reactivity:  Human  Mouse  Rat  
 Applications:  WB  IHC  ICC  Flow Cytometry  IP  
 Molecular Wt.: 21 kDa  
 UniProt ID: P02794

**Background:** Ferritin is important in iron homeostasis. It is the main iron-storage protein, composed of two partially homologous subunits, heavy and light chains. Ferritin molecules in cells containing high levels of iron tend to be rich in light chains, and may have a long-term storage function, whereas heavy-rich ferritins are more active in iron metabolism (1-2). Mutations in the ferritin gene cause the hereditary hyperferritinemia-cataract syndrome and neuroferritinopathy, associated with inflammation. Elevated levels of ferritin are reported as characteristic of adult-onset Still's disease and hemophagocytic syndrome, also associated with inflammation (3). Microfilaments and increased levels of exogenous ferritin are excreted directly into the bile by way of a *second* microfilament-independent, chloroquine-insensitive pathway, supporting a possible physiological mechanism for the release of ferritin from the liver (4).

**Specificity:** A synthetic peptide corresponding to residues near the C terminus of human Ferritin (heavy chain) was used as an immunogen. This antibody recognizes only the Ferritin heavy chain.

**Storage Conditions:** Store at -20 °C. Buffer: 50 mM Tris-Glycine (pH 7.4), 0.15 M NaCl, 40% Glycerol, 0.01% sodium azide and 0.05% BSA. Stable for 12 months from date of receipt.

**Recommended Dilutions:**

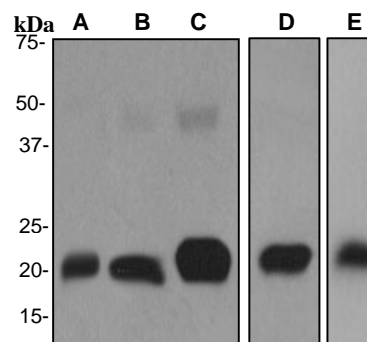
WB: 1:500 – 2000

IHC: 1:100 – 250

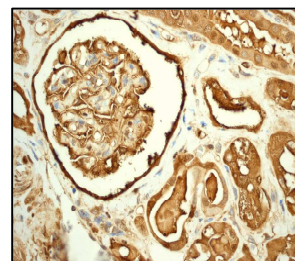
*Please visit [www.epitomics.com](http://www.epitomics.com) for recommended protocols*

**Background References:**

1. Boyd D, et al. Proc Natl Acad Sci U S A. 81(15):4751-5, 1984
2. Lawson DM, et al. Nature. 349(6309):541-4, 1991
3. Zandman-Goddard G, et al. Autoimmunity Reviews 6(7):457-463, 2007
4. Ramm G A, et al. Hepatology 19(2): 504-513, 2005



**Fig 1.** Western blot analysis on (A) human liver, (B) SH-SY5Y, (C) human brain, (D) human brain, and (E) HeLa cell lysates using anti-Ferritin (heavy chain) RabMAB (cat. # 2444-1), dilution (A-C) 1:500, (D) 1:2000 and (E) 1:5000.



**Fig 2.** Immunohistochemical analysis of paraffin-embedded human kidney using anti-Ferritin (heavy chain) RabMAB (cat. #2444-1).

Product QC'd by: 

**For research use only. Not for use in diagnostic or therapeutic applications.**

*This product was manufactured under U.S. Patent No. 5,675,063. For a complete list of protocols and available related products, please visit us at [www.epitomics.com](http://www.epitomics.com).*

**Epitomics, Inc., 863 Mitten Road, Suite 103 Burlingame, California 94010-1303**

Rev. A/04-05/JS