

**Filamin A Phospho (pS2152) Rabbit Monoclonal Antibody
Product Data Sheet**

Catalog # 2285-1

Clone ID: EP2310AY **Lot #:** Please refer to the vial
Quantity: 100 µl
Type: Rabbit Monoclonal IgG
Species Cross-reactivity*: Human Mouse Rat
Applications: WB IHC ICC Flow Cytometry IP
Molecular Wt.: 280 kDa
UniProt ID: P21333

*Species cross-reactivity is based on WB analysis

Background: Filamins are a family of high molecular mass cytoskeletal proteins that organize filamentous actin in networks and stress fibers. Recently it has become clear that filamins anchor various transmembrane proteins to the actin cytoskeleton and provide a scaffold for a wide range of cytoplasmic signaling proteins (1). Actin-binding protein (Filamin A) is a ubiquitous dimeric actin cross-linking phosphoprotein of peripheral cytoplasm, where it promotes orthogonal branching of actin filaments and links actin filaments to membrane glycoproteins (2). The actin-binding domain is near the amino-terminus of the subunit where the amino acid sequence is similar to other actin filament binding proteins, including alpha-actinin, beta-spectrin, dystrophin, and Dictyostelium abp-120. Detection of Filamin A /Fh1 proteins suggests that these presenilin-interacting proteins may be involved in the development of Alzheimer's disease and that interactions between presenilins and Filamin A /Fh1 may be functionally significant (3).

Specificity: A phospho specific peptide corresponding to residues surrounding serine 2152 was used as an immunogen. This antibody detects filamin A phosphorylated on serine 2152.

Storage Conditions: Store at -20 °C. Buffer: 50 mM Tris-Glycine (pH 7.4), 0.15 M NaCl, 40% Glycerol, 0.01% sodium azide and 0.05% BSA. Stable for 12 months from date of receipt.

Recommended Dilutions:

WB: 1:1,000 – 10,000
IHC: 1:100 – 250
ICC: 1:100 – 250

Please visit www.epitomics.com for recommended protocols

Background References:

1. van der Flier A. Biochim Biophys 1538(2):99-117, 2001
2. Gorlin JB, et al. J Cell Biol 111(3):1089-105, 1990
3. Zhang W, et al. J Neurosci 18(3):914-22, 1998

Antigen	Clone	Catalog #
Filamin A	EP2405Y	2242-1

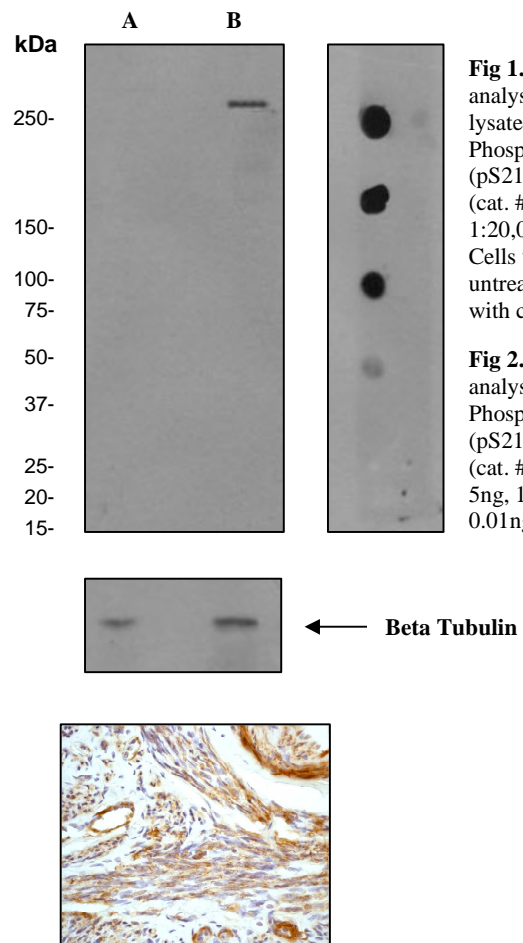


Fig 1. Western blot analysis on HeLa cell lysates using anti-Phospho-Filamin A (pS2152) RabMAb (cat. #2285-1), 1:20,000 dilution. Cells were either (A) untreated (B) treated with calyculin A.

Fig 2. Dot blot analysis using anti-Phospho-Filamin A (pS2152) RabMAb (cat. #2285-1), using 5ng, 1ng, 0.1ng, 0.01ng.

Fig 2. Immunohistochemical analysis of paraffin-embedded human uterus using anti-Filamin A RabMAb (cat. # 2285-1).

Product QC'd by:

For research use only. Not for use in diagnostic or therapeutic applications.

This product was manufactured under US Patents No. 5,675,063 and 5,599,681. For a complete list of protocols and available related products, please visit www.epitomics.com.