

**IL-1 Beta Rabbit Monoclonal Antibody**  
**Product Data Sheet**

**Catalog # 1743-1**

**Clone ID:** EP407Y      **Lot #:** Please refer to the vial  
**Quantity:** 100 µl  
**Type:** Rabbit Monoclonal IgG  
**Species Cross-reactivity:**  Human  Mouse  Rat  
**Applications:**  WB  IHC  ICC  Flow Cytometry  IP  
**Molecular Wt.:** 17 kDa  
**UniProt ID:** P01584

**Background:** Interleukin 1 beta (IL1 beta) is a pro-inflammatory cytokine belonging to IL1 family. There are two known forms of IL1, IL1 alpha (predominant form in mice) and IL1 beta (predominant form in humans). IL1 beta and alpha are both synthesized as precursors. The IL1 beta precursor form is not biologically active, while IL1 alpha is. Expressed mainly by stimulated macrophages and monocytes, IL1 beta precursor is cleaved by Caspase 1/ICE and other proteases (2-3). Activated IL1 alpha remains mostly in the cytosol, activated IL1 beta is widely secreted. IL1 beta is known to be a mediator in inflammatory response and to be involved in a variety of cellular activities, proliferation, differentiation and apoptosis. Recent studies have shown IL1 beta to be a major cause of severe inflammation in the mouse model of Crohn's disease, implicating IL1 beta as a potential marker for this disease (4).

**Specificity:** A recombinant human IL-1 beta protein was used as an immunogen.

**Storage Conditions:** Store at -20 °C. Buffer: 50 mM Tris-Glycine (pH 7.4), 0.15 M NaCl, 40% Glycerol, 0.01% sodium azide and 0.05% BSA. Stable for 12 months from date of receipt.

**Recommended Dilutions:**

**WB:** 1:500 – 2,000

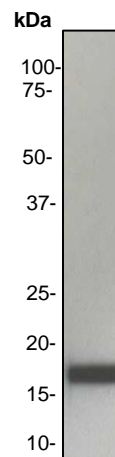
Please visit [www.epitomics.com](http://www.epitomics.com) for recommended protocols

**Background References:**

1. March CJ, et al. *Nature* 315:641-647, 1985.
2. Dinarello CA, et al. *Blood* 87:2095-2147, 1996.
3. Yuan J, et al. *Cell* 75:641-652, 1993
4. Shin M, et al. *Science* 4:734-738, 2005.

**Related Products:**

<u>Antigen</u>	<u>Clone</u>	<u>Catalog #</u>
IL-1 beta (C-term)	EP408Y	1630-1
IL-1R1	EP409Y	1695-1
IL-15	EP433Y	1657-1
IL-17	EP434Y	1656-1



**Fig 1.** Western blot analysis of anti-IL1 beta RabMAb (cat. # 1743-1).

Product QC'd by: \_\_\_\_\_

**For research use only. Not for use in diagnostic or therapeutic applications.**

This product was manufactured under U.S. Patent No. 5,675,063. For a complete list of protocols and available related products, please visit us at [www.epitomics.com](http://www.epitomics.com).

Epitomics, Inc., 863 Mitten Road, Suite 103 Burlingame, California 94010-1303

Rev A/072006/SML