

GRB2 (N-term) Rabbit Monoclonal Antibody
Product Data Sheet

Catalog # 1584-1

Clone ID: Y301 **Lot #:** Please refer to the vial
Quantity: 100 µl
Type: Rabbit Monoclonal IgG
Species Cross-reactivity: Human Mouse Rat
Applications: WB IHC ICC Flow Cytometry IP
Molecular Wt.: 25 kDa
UniProt ID: P62993

Background: The growth factor bound protein 2 (GRB2) is a 25 kDa cytosolic protein that contains one src homology (SH2) domain and two SH3 domains (1). GRB2 associates with Tyrosine phosphorylated EGFRs and PDGFRs via its SH2 domain. GRB2 also plays a crucial role in two separate insulin pathways leading from the insulin receptor to the Ras protein thus affecting mitogenic signaling (2). Additionally GRB2, a bifunctional adaptor protein, recruits Sos for Ras activation and subsequent signal transmission (3).

Specificity: A synthetic peptide corresponding to residues in the N-terminus of human GRB2 was used as an immunogen. This antibody can also detect the splice isoform GRB3-3 of GRB2.

Storage Conditions: Store at -20 °C. Buffer: 50 mM Tris-Glycine (pH 7.4), 0.15 M NaCl, 40% Glycerol, 0.01% sodium azide and 0.05% BSA. Stable for 12 months from date of receipt.

Recommended Dilutions:

WB: 1:500
IHC: 1:100-250
ICC: 1:100-250
FC: 1:40

Background References:

1. Matuoka, K.; Shibata, M.; Yamakawa, A.; Takenawa, T.: Proc. Nat. Acad. Sci. 89: 9015-9019, 1992
2. Lowenstein, E. J.; Daly, R. J.; Batzer, A. G.; Li, W.; Margolis, B.; Lammers, R.; Ullrich, A.; Skolnik, E. Y.; Bar-Sagi, D.; Schlessinger, J.: Cell 70: 431-442, 1992.
3. Nioche P.; et al, JMB, Volume 315, Number 5, February (2002), 1167-1177(11)

Product QC'd by: 

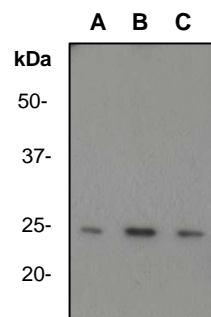


Fig 1. Western blot analysis of anti-GRB2 (N-term) RabMab (catalog #1584-1), dilution 1:500
A-NIH 3T3
B-PC12
C-Hela

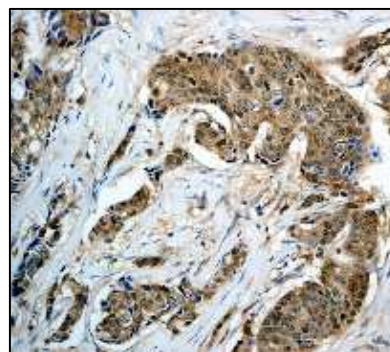


Fig 2. Immunohistochemical analysis of paraffin-embedded human breast carcinoma using anti-GRB2 (N-term) RabMab (catalog #1584-1).

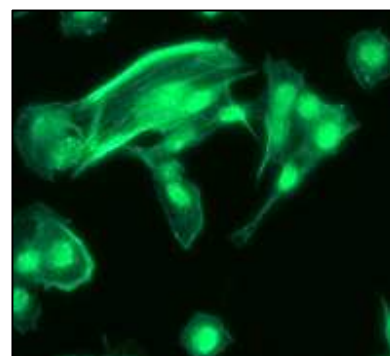


Fig 3. Immunofluorescent staining of PC-12 cells using anti-GRB-2 (N-term) RabMab (catalog #1584-1).

For research use only. Not for use in diagnostic or therapeutic applications.

This product was manufactured under U.S. Patent No. 5,675,063. For a complete list of protocols and available related products, please visit www.epitomics.com.

Epitomics, Inc., 863 Mitten Road, Suite 103 Burlingame, California 94010-1303

Rev. B/0109/SML