

**Src Phospho (pY529) Rabbit Monoclonal Antibody
 Product Data Sheet**

Catalog # 1550-1

Clone ID: Y232 **Lot #:** Please refer to vial
Quantity: 100 µl
Type: Rabbit Monoclonal IgG
Species Cross-reactivity: Human Mouse Rat
Applications: WB IHC ICC Flow Cytometry IP
Molecular Wt.: 60 kDa
UniProt ID: P12931

Background: Src is a protein tyrosine kinase known to regulate cellular adhesion. Composed of three major domains; SH2, SH3 and a kinase catalytic domain, Src can be switched from an inactive to an active state through control of its phosphorylation state or through protein-protein interaction. Phosphorylation of Y529 by Csk and Chk inactivates Src, while dephosphorylation of Y529 will modify its conformation to an open active state (1-3). Mutation of Y529 leads to Src overactivity. Several cancers including colon and breast cancer have been associated with an increase of Src activity (4).

Specificity: A synthetic phospho-peptide corresponding to residues surrounding Tyrosine 529 of human Src was used as immunogen. The antibody will detect Src phosphorylation on Tyrosine 529 of both isoforms.

Storage Conditions: Store at -20 °C. Buffer: 50 mM Tris-Glycine (pH 7.4), 0.15 M NaCl, 40% Glycerol, 0.01% sodium azide and 0.05% BSA. Stable for 12 months from date of receipt.

Recommended Dilutions:

WB: 1:5,000-10,000
 ICC: 1:50
 IP: 1:50

Background References:

1. Cooper, J. A., and King, C. S. (1986) Mol. Cell. Biol. 6, 4467-4477
2. Courtneidge, S. A. (1985) EMBO J. 4, 1471-1477
3. Okada, M., Howell, B. W., Broome, M. A., and Cooper, J. A. (1993) J. Biol. Chem. 268, 18070-18075
4. Leiming Li, Masaya Okura, Akira Imamoto Molecular and Cellular Biology, Feb. 2002, p. 1203-1217

Product QC'd by: _____

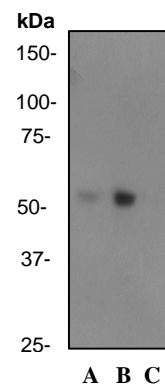


Fig 1. Western blot analysis on A431 cell lysate using anti-Phospho-Src (pY529) RabMab (cat. # 1550-1), dilution 1:10,000. Cells were either (A) untreated, (B) treated with EGF and (C) treated with EGF+ alkaline phosphatase.

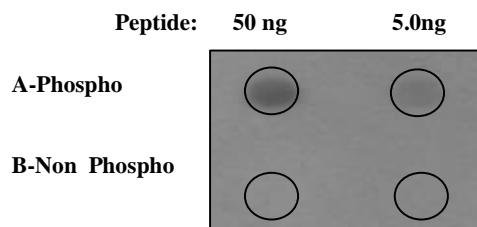


Fig 2. Dot Blot analysis on immunogen phospho-peptide (A) and non-phospho peptide (B) using anti-Phospho-Src (pY529) RabMab (cat. # 1550-1) dilution 1:2,000

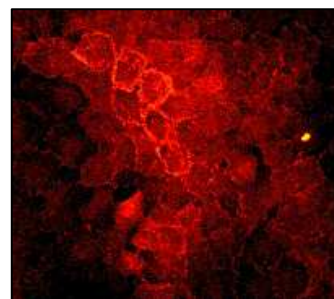


Fig 3. Immunofluorescent staining of A431 cells using anti-Phospho-Src (pY529) RabMab (cat. # 1550-1).

For research use only. Not for use in diagnostic or therapeutic applications.

This product was manufactured under U.S. Patent No. 5,675,063. For a complete list of protocols and available related products, please visit www.epitomics.com.

Epitomics, Inc., 863 Mitten Road, Suite 103 Burlingame, California 94010-1303

Rev. A/04-05/JS