

**Phospho-Cbl (pY774) Rabbit Monoclonal Antibody
Product Data Sheet**

Catalog #1160-1

Clone ID: E160 Lot #: C012810
Quantity: 100 µl
Type: Rabbit Monoclonal IgG
Species Cross-reactivity: Human Mouse Rat
Applications: WB IHC ICC Flow Cytometry IP n/d ELISA
Molecular Wt.: 120 kDa
UniProt ID: P22681

Background: c-Cbl, product of c-cbl proto-oncogene, is a 120 kDa cytoplasmic protein involved in tyrosine kinase-dependent signaling pathways (1-3). c-Cbl is one of the earliest targets of tyrosine phosphorylation in response to a number of cellular stimuli. For instance, stimulation of growth factor receptors by EGF, PDGF, NGF and FGF, results in c-Cbl tyrosine phosphorylation, in lymphoid and other cell lines (4).

Specificity: A synthetic phospho-peptide corresponding to residues surrounding Tyr774 of human Cbl was used as immunogen. The antibody detects Cbl phosphorylated on Tyrosine 774.

Storage Conditions: Store at -20 °C. Buffer: 50 mM Tris-Glycine (pH 7.4), 0.15 M NaCl, 40% Glycerol, 0.01% sodium azide and 0.05% BSA. Stable for 12 months from date of receipt.

Recommended Dilutions:

WB: 1:1,000
IHC: 1:25
ICC: 1:25
Flow Cytometry: 1:20
IP: 1:20

Background References:

1. Langdon, W. Y., et al. v-cbl, an oncogene from a dual-recombinant murine retrovirus that induces early B-lineage lymphomas. Proc. Natl. Acad. Sci. USA 86: 1168-72 (1989).
2. Blake, T. J., et al. The truncation that generated the v-cbl oncogene reveals an ability for nuclear transport, DNA binding and acute transformation. EMBO J. 12: 2017-26 (1993).
3. Joazeiro, C. A., et al. The tyrosine kinase negative regulator c-Cbl as a RING-type, E2-dependent ubiquitin-protein ligase. Science 286: 309-12 (1999).
4. Galisteo, M. L., et al. Tyrosine phosphorylation of the c-cbl proto-oncogene protein product and association with epidermal growth factor (EGF) receptor upon EGF stimulation. J. Biol. Chem. 270: 20242-5 (1995).

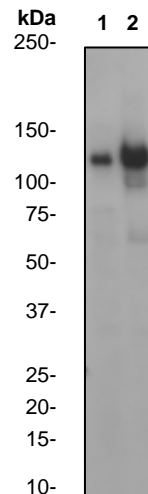


Fig 1. Western blot analysis on (1) Jurkat and (2) Jurkat + Pervanadate cell lysates using anti-Phospho-Cbl (pY774) RabMAb (catalog #1160-1), 1:1,000 dilution.

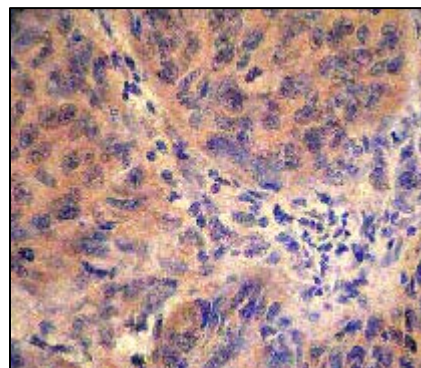


Fig 2. Immunohistochemical analysis of human cervical carcinoma using anti-Phospho-Cbl (pY774) RabMAb (catalog #1160-1).

Product QC'd by: _____

For research use only. Not for use in diagnostic or therapeutic applications.

This product was manufactured under US Patents No. 5,675,063 and 5,599,681. For a complete list of protocols and available related products, please visit www.epitomics.com.