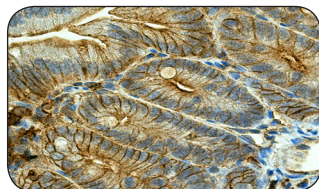


RabMAbs[®] Validated on Mouse Tissue

Featured Rabbit Monoclonal Antibodies

EGFR Phospho (pY1068)

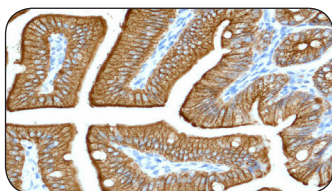
EGFR is a 175 kDa transmembrane glycoprotein receptor tyrosine kinase that is involved in diverse cellular functions including cell proliferation, differentiation, motility, survival and in tissue development. The phosphorylation level of EGFR is considered one of the important predictors of clinical outcome in non-small cell lung cancer therapy.



Name	Cat#	Clone ID	Applications	Species
EGFR Phospho (pY1068)	1727-1	EP774Y	WB, IHC, ICC	Hu + Ms +

Cytokeratin 8

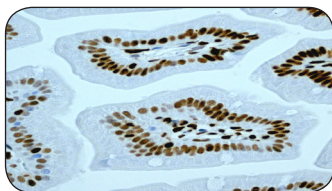
Cytokeratin 8 is a member of the type II keratin family occurring in many simple epithelial cells, and can also be synthesized in certain non-epithelial cells. It has been reported that CK8/CK18-free hepatocytes from K8-null mice are more sensitive to Fas-mediated apoptosis, in line with an increased Fas density at the cell surface and an altered c-Flip regulation of the anti-apoptotic ERK1/2 signaling pathway.



Name	Cat#	Clone ID	Applications	Species
Cytokeratin 8	2032-1	EP1628Y	WB, IHC, ICC, IP, FC	Hu +

MCM2

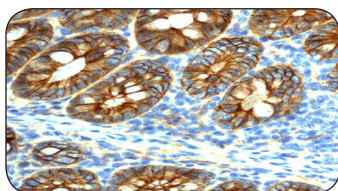
Minichromosome maintenance protein 2 (MCM2) is a member of the MCM family that regulates mammalian DNA replication. MCM2 acts as a factor to license DNA for one and only one round of replication per cell cycle. This protein forms a complex with MCM4, 6, and 7, and has been shown to regulate the helicase activity of the complex.



Name	Cat#	Clone ID	Applications	Species
MCM2	2929-1	EPR4120	WB, IHC, ICC, IP	Hu + Ms +

p120 Catenin

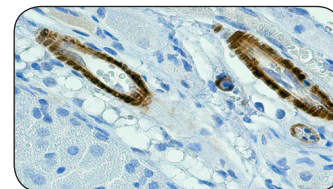
p120 Catenin is a member of the Armadillo protein family, which function in adhesion between cells and signal transduction. It is implicated both in cell transformation by SRC and in ligand-induced receptor signaling through the EGF, PDGF, CSF-1 and ERBB2 receptors.



Name	Cat#	Clone ID	Applications	Species
p120 Catenin	2806-1	EPR357(2)	WB, IHC, FC, IP	Hu + Ms + Rt +

Calponin-1

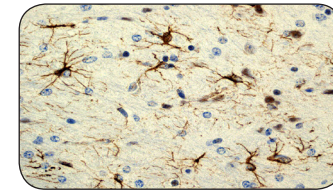
Calponin is a smooth muscle specific, actin-, tropomyosin- and calmodulin-binding protein thought to be involved in regulation of actomyosin as well as the regulation or modulation of contraction. Immunoreactivity for Calponin confirms the known neoplastic myoepithelial component of adenoid cystic carcinomas and epithelial-myoeplithelial carcinomas.



Name	Cat#	Clone ID	Applications	Species
Calponin-1	1806-1	EP798Y	WB, IHC, ICC	Hu + Ms + Rt +

GFAP

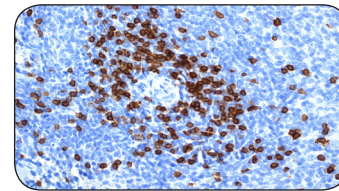
GFAP belongs to the class III of the intermediate filament (IF) proteins highly specific to astrocytes which function as nerve cells in the brain and in the central nervous system. GFAP is most abundant in mature astrocytes, and is used as a marker to distinguish astrocytes from other glial cells during development.



Name	Cat#	Clone ID	Applications	Species
GFAP	2301-1	EPR1034Y	WB, IHC, ICC, IP	Hu + Ms + Rt +

CD3 gamma

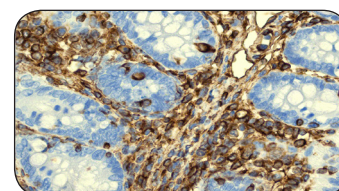
CD3 is composed of five invariant polypeptide chains that associate to form three dimers. CD3 gamma together with CD3-epsilon, -delta and -zeta, and the T-cell receptor alpha/beta and gamma/delta heterodimers, forms the T-cell receptor-CD3 complex. This complex plays an important role in coupling antigen recognition to several intracellular signal-transduction pathways.



Name	Cat#	Clone ID	Applications	Species
CD3 gamma	3256-1	EPR4517	WB, IHC, ICC, IP	Hu + Ms +

Vimentin

Vimentin is the most common member of intermediate filament (IF) family and one of the main components in cytoskeleton structure. Vimentin is essential in the role of cell integrity and cytoskeletal stability. Vimentin expression may provide useful insights into mechanisms of invasion and/or breast cancer cell progression.



Name	Cat#	Clone ID	Applications	Species
Vimentin	2707-1	EPR3776	WB, IHC, ICC, FC	Hu + Ms + Rt +

RabMAbs® Validated on Mouse Tissue

Featured Rabbit Monoclonals Antibodies

Protein Name	Cat #	Clone ID	Applications	Species
ACE	2504-1	EPR2757	WB, IHC, FC	Hu, Ms
Adducin alpha (C-term)	1706-1	EP734Y	WB, IHC, ICC	Hu, Ms
Akt1	1085-1	E45	WB, IHC, ICC, IP	Hu, Ms, Rt
Akt1 (C-term)	1081-1	Y89	WB, IHC, ICC, IP, FC	Hu, Ms, Rt
Akt1 Phospho (pS473)	2118-1	EP1209Y	WB, IHC, ICC	Hu, Ms
Aldh1A1	2052-1	EP1933Y	WB, IHC, ICC, IP	Hu, Ms, Rt
Aldh7A1	2070-1	EP1935Y	WB, IHC, ICC, IP	Hu, Ms
Aldolase B	2483-1	EPR3138Y	WB, IHC, FC	Hu, Ms, Rt
Aldolase B	2689-1	EPR3137	WB, IHC	Hu, Ms, Rt
Alpha Fodrin	2760-1	EPR3016	WB, IHC, IP	Hu, Ms, Rt
Alpha-Tubulin	1878-1	EP1332Y	WB, IHC, ICC, FC, IP	Hu, Ms, Rt
Alpha-Tubulin	2871-1	EPR1333	WB, IHC, ICC, FC	Hu, Ms, Rt
AMACR	2721-1	EPR3717	WB, IHC, ICC	Hu, Ms, Rt
Bcl-x	1018-1	E18	WB, IHC, ICC, IP, FC	Hu, Ms, Rt
B-Catenin	1247-1	E247	WB, IHC, ICC, IP	Hu, Ms
B-Tubulin	1879-1	EP1331Y	WB, IHC, ICC, FC, IP	Hu, Ms, Rt
B-Tubulin class III (C-term)	1967-1	EP1569Y	WB, IHC, ICC, FC, IP	Hu, Ms, Rt
B-Tubulin class III (N-term)	2276-1	EPR1568Y	WB, IHC, FC, IP	Hu, Ms, Rt
Calbindin	2946-1	EP3478	WB, IHC, ICC	Hu, Ms, Rt
Caldesmon (CaM)	1089-1	E89	WB, IHC, ICC, IP, FC	Hu, Ms, Rt
Calponin-1 (C-term)	1806-1	EP798Y	WB, IHC, ICC	Hu, Ms, Rt
Caspase-9 (Pro)	1023-1	E23	WB, IHC, ICC, FC, IP	Hu, Ms
CCR2/CKR2 (N-term)	2068-1	E68	IHC, ICC, IP, FC	Hu, Ms
CD13	2972-1	EPR4058	WB, IHC, ICC, IP	Hu, Ms, Rt
CD3 gamma	3256-1	EPR4517	WB, IHC, ICC, IP	Hu, Ms
CD34	2150-1	EP373Y	WB, IHC, ICC, FC, IP	Hu
c-Jun (N-term)	1254-1	E254	WB, IHC, ICC, IP	Hu, Ms, Rt
c-Myc (N-term)	1472-1	Y69	WB, IHC, ICC, IP	Hu, Ms, Rt
Cyclin D1	2261-1	EPR2241	WB, IHC, ICC, IP	Hu, Ms, Rt
Cytokeratin 4	2843-1	EPR1598	WB, IHC, ICC	Hu Rt
Cytokeratin 5 (C-term)	1988-1	EP1601Y	WB, IHC, ICC, IP	Hu
Cytokeratin 8	2032-1	EP1628Y	WB, IHC, ICC, FC, IP	Hu
Cytokeratin 15 (C-term)	1954-1	EPR1614Y	WB, IHC, ICC, FC	Hu, Ms
DARPP-32	1710-1	EP720Y	WB, IHC, ICC, IP	Hu, Ms, Rt
Desmin	1466-1	Y66	WB, IHC	Hu, Ms, Rt
EGFR Phospho (pY1068)	1727-1	EP774Y	WB, IHC, ICC	Hu, Ms
ERG	2805-1	EPR3864	WB, IHC, ICC	Hu, Ms, Rt
Ezrin/Radixin/Moesin	2180-1	EP2122Y	WB, IHC, ICC, IP	Hu, Ms, Rt
Fibronectin	1573-1	F1	WB, IHC, IP	Hu, Ms, Rt
Fibronectin	1574-1	F14	WB, IHC	Hu, Ms, Rt

Protein Name	Cat #	Clone ID	Applications	Species
FOXP1	3210-1	EPR4113	WB, IHC, ICC, IP	Hu, Ms, Rt
GFAP (N-term)	2301-1	EPR1034Y	WB, IHC, ICC, IP	Hu, Ms, Rt
GPR49	2495-1	EPR3065Y	WB, IHC, IP	Hu, Ms, Rt
Hemoglobin alpha chain	2680-1	EPR3608	WB, IHC, FC, IP	Hu, Ms, Rt
ILF3	2640-1	EPR3626	WB, IHC, ICC, FC, IP	Hu, Ms
Integrin beta-1/CD29	1798-1	EP1041Y	WB, IHC, FC	Hu, Ms, Rt
Integrin beta-3A/CD61	2264-1	EPR2417Y	WB, IHC	Hu, Ms, Rt
MCM2	2929-1	EPR4120	WB, IHC, ICC, IP	Hu, Ms
MCM2 Phospho (pS41)	3252-1	EPR4171	WB, IHC, ICC, IP	Hu, Ms, Rt
MCM5	2374-1	EP2683Y	WB, IHC, ICC, FC, IP	Hu, Ms
MLH1	2786-1	EPR3894	WB, IHC, FC, IP	Hu, Ms, Rt
MOG	3342-1	EP4281	WB, IHC, ICC	Hu, Ms, Rt
MSH2	2848-1	EPR3943	WB, IHC, ICC, FC	Hu
MSH6	2846-1	EPR3945	WB, IHC, ICC, IP	Hu, Ms
Myosin Light Chain 2	2742-1	EPR3741	WB, IHC, IP	Hu, Ms, Rt
N-Cadherin (C-term)	2019-1	EPR1792Y	WB, IHC, ICC, FC, IP	Hu, Ms, Rt
NF-H	1707-1	EP673Y	WB, IHC, ICC	Hu, Ms, Rt
NGF Receptor	1812-1	EP1039Y	WB, IHC, ICC, IP	Hu, Ms, Rt
nNOS	2081-1	EP1855Y	WB, IHC, IP, FC	Hu, Ms, Rt
NOX4	3187-1	UOTR1B492	WB, IHC, ICC, IP	Hu, Ms, Rt
p27/Kip1 Phos (pS10)	2187-1	EP233(2)Y	WB, IHC, IP	Hu, Ms, Rt
p38 MAPK	1544-1	Y122	WB, IHC, ICC	Hu, Ms, Rt
p73	1636-1	EP436Y	WB, IHC, ICC, IP	Hu, Ms, Rt
p120 Catenin	2806-1	EPR357(2)	WB, IHC, ICC, IP	Hu, Ms, Rt
PARP-1 (Cleaved p25)	1051-1	E51	WB, IHC, ICC, FC, IP	Hu, Ms
Paxillin (N-term)	1500-1	Y113	WB, IHC, ICC, IP	Hu, Ms, Rt
PCNA	2714-1	EPR3821	WB, IHC, ICC, IP	Hu, Ms, Rt
PDGF Receptor B (C-term)	1469-1	Y92	WB, IHC, ICC, IP	Hu, Ms
PTEN (C-term)	1539-1	Y184	WB, IHC, ICC, FC, IP	Hu, Ms, Rt
S100 beta (C-term)	2017-1	EP1576Y	WB, IHC, IP	Hu, Ms, Rt
SATB1	2938-1	EPR3951	WB, IHC, ICC, IP	Hu, Ms
SATB2	2819-1	EPNCIR130A	WB, IHC, ICC, IP	Hu, Ms, Rt
Smad1	1649-1	EP565Y	WB, ICC	Hu, Ms
Smad3	1735-1	EP568Y	WB, IHC, ICC, IP	Hu Rt
Topoisomerase II alpha	1826-1	EP1102Y	WB, IHC, IP	Hu, Ms
Trk A	3329-1	EPR1104(2)	WB, IHC	Hu, Ms, Rt
Vimentin	2707-1	EPR3776	WB, IHC, ICC, FC	Hu, Ms, Rt
Vitronectin	1783-1	EP873Y	WB, IHC, ICC	Hu, Ms, Rt
Wilm's Tumor	2797-1	CANR9IHC562	WB, IHC	Hu, Ms
WNT2	3169-1	EPR3101(2)	WB, IHC, ICC, IP	Hu, Ms, Rt

Please visit www.epitomics.com for a updated complete listing of all validated antibodies



877-772-2622 (Toll Free US and Canada)
650-583-6688 (Domestic and Int'l)



info@epitomics.com



www.epitomics.com

Complete datasheets and images for
every antibody available on-line.

EPITOMICS®
Better Antibodies · Better Science