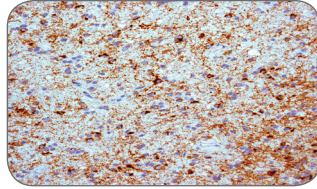


Neuroscience

Featured Rabbit Monoclonal Antibodies

BM88

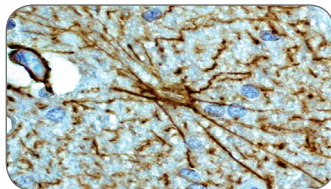
BM88 is a neuron-specific protein widely distributed in the nervous system and implicated in cell cycle exit and differentiation of neuronal precursors. It is an integral membrane protein, which appears early during brain development and remains at high levels at the mature state. It is expressed in terminally differentiated neurons and also in neuronal progenitors, in lower levels.



Name	Cat#	Clone ID	Applications	Species
BM88	2767-1	EPR3739	WB, IHC, ICC, IP	Hu + Ms + Rt +

GFAP

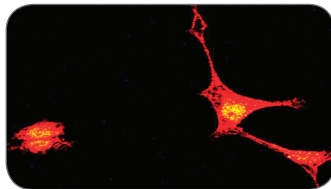
Glial fibrillary acidic protein (GFAP) belongs to the class III of the intermediate filament (IF) proteins highly specific to astrocytes which function as nerve cells in the brain and in the central nervous system (CNS). Mutations in GFAP cause Alexander disease, a rare disorder of the CNS.



Name	Cat#	Clone ID	Applications	Species
GFAP	1665-1	EP672Y	WB, IHC, ICC, IP	Hu + Rt +

Synapsin 1 Phospho (pS553)

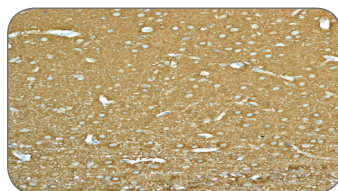
Synapsin I is a member of neuron-specific phosphoproteins that associate with synaptic vesicles. Synapsin I also functions in binding synaptic vesicles to several elements of the cytoskeleton including actin filaments, microtubules and spectrin.



Name	Cat#	Clone ID	Applications	Species
Synapsin 1	1532-1	E377	WB, ICC	Hu + Ms + Rt +

Beta-Tubulin class III

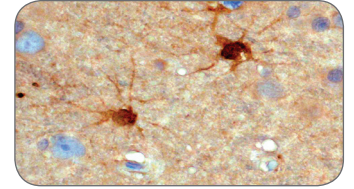
Microtubules are essential parts in eukaryotic cell structures, transportation, and mitosis and consists mainly of 2 soluble protein subunits, alpha and beta tubulin. Class III beta tubulin is a vertebrate tubulin isotype specific to the neurons and mammalian testis cells, making it an ideal neuronal marker.



Name	Cat#	Clone ID	Applications	Species
Beta-Tubulin class III	2276-1	EPR1568Y	WB, IHC, FC, IP	Hu + Ms + Rt +

Enolase 2 gamma (NSE)

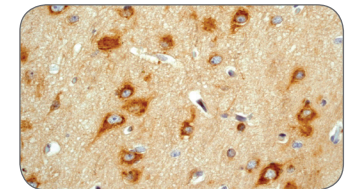
Enolase 2 gamma is a glycolytic enzyme that catalyzes the interconversion of 2-phosphoenolpyruvate to phosphoenolpyruvate in the glycolytic pathway. The gamma-, or neuron-specific, enolase (ENO2) is the major form found in mature neurons and in cells of neuronal origin.



Name	Cat#	Clone ID	Applications	Species
Enolase 2 gamma (NSE)	2588-1	EPR3377	WB, IHC, ICC, FC	Hu + Ms + Rt +

Amyloid Beta A4 Precursor (APP)

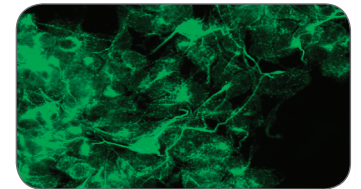
Alzheimer's disease (AD) is characterized by the presence of senile plaques in the brain and blood vessel walls. Amyloid Beta A4 protein has been found to be the principal constituent of senile plaques of ADs patients. The amyloid beta-protein precursor (APP) is proteolytically cleaved to generate the 4 kDa A4 protein.



Name	Cat#	Clone ID	Applications	Species
Amyloid Beta A4 Precursor (APP)	1565-1	Y188	WB, IHC, ICC, FC, IP	Hu + Ms + Rt +

Neurofilament 66

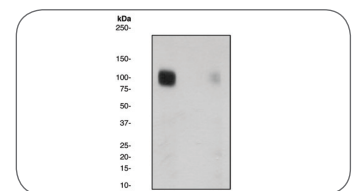
Neurofilaments (NF) are cytoplasmic intermediate filaments (IFs) found in neurons. NF-66 is a member of the IF family. Classified as a type IV IF, NF-66 is expressed by most neurons and has been shown to co-assemble with other NF triple proteins (light, medium and heavy NF).



Name	Cat#	Clone ID	Applications	Species
Neurofilament 66	1674-1	EP676Y	WB, IHC, ICC, FC, IP	Hu + Rt +

GABA(B) R2 Phospho (pS893)

GABA (gamma-aminobutyric acid) is the main inhibitory neurotransmitter in the mammalian central nervous system, where it exerts its effects through ionotropic (GABA(A/C)) receptors to produce fast synaptic inhibition and metabotropic (GABA(B)) receptors to produce slow, prolonged inhibitory signals.



Name	Cat#	Clone ID	Applications	Species
GABA(B) R2 Phospho (pS893)	2311-1	EP2318Y	WB, IHC, ICC	Hu + Ms + Rt +


Neuroscience

Featured Rabbit Monoclonal Antibodies

Protein Name	Cat #	Clone ID	Applications	Species
ACHR-beta (extracellular)	2123-1	EP2067Y	WB, ICC, FC	Hu, Ms, Rt
Alpha-Synuclein	2016-1	EP1646Y	WB, ICC	Hu, Ms, Rt
Amphiphysin	2084-1	EP2060Y	WB, IHC, ICC, FC	Hu, Ms, Rt
Amyloid Beta A4 Precursor	1565-1	Y188	WB, IHC, ICC, FC, IP	Hu, Ms, Rt
ATF-2	1242-1	E242	WB, IHC, ICC, IP	Hu
ATG9A	2975-1	EPR2450(2)	WB, IHC, ICC, IP	Hu, Ms, Rt
BACE1	2882-1	EPR3956	WB, IP	Hu, Ms, Rt
BDNF	3160-1	EPR1292	WB, IHC	Hu, Ms, Rt
Beta-Synuclein	1977-1	EP1537Y	WB, IHC, ICC, IP	Hu, Ms, Rt
BM88	2767-1	EPR3739	WB, IHC, ICC, IP	Hu, Ms, Rt
Calsyntenin-1	3176-1	EPR2963	WB, IHC, ICC	Hu, Ms
CaMKI	2331-1	EPR2217Y	WB, IHC, ICC	Hu, Ms, Rt
CaMKII	2048-1	EP1829Y	WB, IHC, ICC, FC, IP	Hu, Ms, Rt
Cdk5	1698-1	EP715Y	WB, IHC, ICC, FC, IP	Hu, Ms, Rt
Dab1	2294-1	EP2248Y	WB	Ms, Rt
DARPP-32	1710-1	EP720Y	WB, IHC, ICC, IP	Hu, Ms, Rt
Dynamin-1	1851-1	EP801Y	WB, IHC, ICC	Hu, Ms, Rt
Enolase 2 gamma (NSE)	2588-1	EPR3377	WB, IHC, ICC, FC	Hu, Ms, Rt
FAK2/Pyk2	1509-1	YE353	WB, IHC, ICC, IP	Hu, Ms, Rt
GABA(B) R2	2253-1	EP2411Y	WB, IHC, ICC, FC	Hu, Ms, Rt
GAD2	2482-1	EPR2553Y	WB	Hu, Ms, Rt
Gamma Synuclein (SR)	1978-1	EP1539Y	WB, IHC, ICC, FC, IP	Hu, Rt
GAP43	2256-1	EP928Y	WB, ICC	Hu, Ms, Rt
GFAP	1665-1	EP672Y	WB, IHC, ICC, IP	Hu, Rt
GluR1	1308-1	E308	WB, IHC, IP	Hu
GluR2	1828-1	EP966Y	WB, FC, IP	Hu, Ms, Rt
GluR2/3	1905-1	EP929Y	WB, IHC, ICC, IP	Hu, Ms, Rt
GluR3	1731-1	EP813Y	WB, IHC, ICC, IP	Hu, Ms
Huntingtin Protein (Htt)	1756-1	EP867Y	WB, IHC, ICC, FC	Hu, Ms, Rt
IPP-1	1747-1	EP902Y	WB, IHC, FC, IP	Hu, Ms, Rt
Kv4.2	1834-1	EP982Y	WB, IHC, FC	Hu
MAG	1804-1	EP971Y	WB, FC, IP	Hu, Ms, Rt
MAP1LC3A	1970-1	EP1528Y	WB, IHC, ICC, IP	Hu, Ms, Rt
MARCKS	1944-1	EP1446Y	WB, IHC, ICC, FC	Hu
MBP	1982-1	EP1448Y	WB, ICC, FC, IP	Hu, Ms, Rt

Protein Name	Cat #	Clone ID	Applications	Species
MEF2A	2080-1	EP1706Y	WB, IHC, ICC, FC	Hu, Ms, Rt
MOG	3144-1	EPR4282	WB	Hu, Ms, Rt
Mst3	1964-1	EP1468Y	WB, IHC, ICC, FC, IP	Hu, Ms, Rt
Musashi 1	1877-1	EP1302	WB, IHC, ICC, FC, IP	Hu, Rt
Neurofilament 66	1674-1	EP676Y	WB, IHC, ICC, FC, IP	Hu, Rt
Neurofilament L	1815-1	EP675Y	WB, FC, IP	Hu, Ms, Rt
Neurofilament M	2700-1	EP2460	WB, IHC, ICC, IP	Hu
NF-H	1707-1	EP673Y	WB, IHC, ICC	Hu, Ms, Rt
NGF beta	1895-1	EP1320Y	WB, IHC, ICC	Hu, Ms, Rt
NGF Receptor	1812-1	EP1039Y	WB, IHC, ICC, IP	Hu, Ms, Rt
NMDAR1	2824-1	EPR2481(2)	WB, ICC, FC	Hu, Ms, Rt
NMDAR2B Phos (pS1303)	2514-1	EP1858Y	WB, ICC	Hu, Ms
PAK3	1717-1	EP797Y	WB, IHC, ICC, IP	Hu, Ms, Rt
Parkin	1679-1	EP668Y	WB, IHC, ICC, FC	Hu, Ms, Rt
Pbx3	3214-1	EPR2833(2)	WB	Hu, Ms, Rt
PGP9.5	2932-1	EPR4118	WB, IHC, FC, IP	Hu, Ms, Rt
PKC Gamma	2878-1	EPR2750	WB	Hu, Ms, Rt
Pou Domain Protein 3A	2083-1	EP1972Y	WB, IHC, ICC, FC, IP	Hu, Ms, Rt
Prion Protein (PrP)	2063-1	EP1802Y	WB, IHC, ICC, FC	Hu, Ms, Rt
PSD95	2366-1	EP2652Y	WB, ICC, FC, IP	Hu, Ms, Rt
RKIP	2460-1	EPR2875Y	WB, IHC, ICC, IP	Hu, Ms, Rt
SATB2	2819-1	EPNCR130A	WB, IHC, ICC, IP	Hu, Ms, Rt
Serum Amyloid A (SAA)	3235-1	EPR4134	WB, IHC	Hu
SNAP-25	3132-1	EP3274	WB, IHC, ICC	Hu, Ms, Rt
SOD1	2018-1	EP1727Y	WB, IHC, ICC, FC	Hu, Rt
Stathmin	2676-1	EP1572	WB, IHC, ICC, FC, IP	Hu, Ms, Rt
Substance P	3229-1	EPR3959	IHC	Hu
Synapsin I Phospho (pS553)	1532-1	E377	WB, ICC	Hu, Ms, Rt
Synapsin II	2564-1	EPR3277	WB, IHC, ICC, FC	Hu, Ms, Rt
Synaptophysin	1870-1	EP1098Y	WB, ICC, FC, IP	Hu, Ms, Rt
SynGAP	2477-1	EPR2883Y	WB, FC	Hu, Ms, Rt
Tau	2368-1	EP2456Y	WB, ICC, FC	Hu, Ms, Rt
TPPP	2633-1	EPR3316	WB, IHC, ICC, FC	Hu, Ms, Rt
Trk	2205-1	EP1056Y	WB, FC, IP	Hu, Ms, Rt
VAMP8	2379-1	EP2629Y	WB, IHC, ICC, FC, IP	Hu, Ms, Rt

Please visit www.epitomics.com for a updated complete listing of all neuroscience antibodies

 877-772-2622 (Toll Free US and Canada)
650-583-6688 (Domestic and Int'l)

 info@epitomics.com

 www.epitomics.com

Complete datasheets and images for every antibody available on-line.

EPITOMICS
Better Antibodies · Better Science