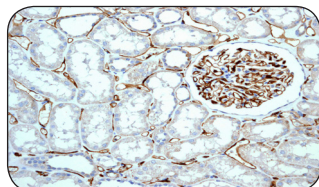


Immunology

Featured Rabbit Monoclonal Antibodies

HLA-Dra

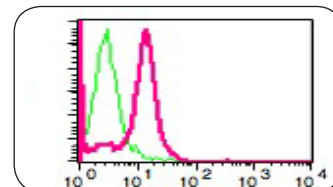
HLA-Dra is one of the HLA class II alpha chain paralogues. It plays a central role in the immune system by presenting peptides derived from extracellular proteins. HLA-Dra is a polymorphic cell surface glycoprotein that is crucial for the cellular interaction in immune response.



Name	Cat#	Clone ID	Applications	Species
HLA-Dra	2741-1	EPR3692	WB, IHC, FC, IP	Hu +

TRAP Cleavage (CD40 Ligand)

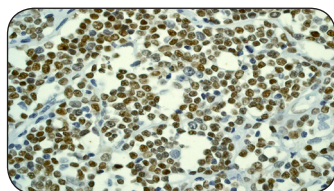
TRAP cleavage (CD40 Ligand) is transiently expressed on the surface of T-cells and binds to CD40, which is expressed on the surface of B-cells. The physiological importance of CD40L has been demonstrated by the fact that expression of defective CD40L protein causes an immunodeficiency state characterized by high IgM and low IgG serum levels, indicating faulty T-cell dependent B-cell activation.



Name	Cat#	Clone ID	Applications	Species
TRAP Cleavage (CD40) Ligand	1845-1	EP462E	WB, FC	Hu + Ms +

Cyclin D1

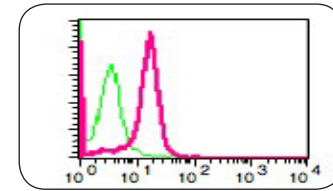
Cyclin D1 belongs to the Cyclin D family and is required for the cell cycle G1/S transition. Cyclin D1 forms a serine/threonine kinase holoenzyme complex with and functions as a regulatory subunit of CDK4 or CDK6. Mutations, amplification and overexpression of Cyclin D1, which alters cell cycle progression, are observed frequently in a variety of tumors and may contribute to tumorigenesis.



Name	Cat#	Clone ID	Applications	Species
Cyclin D1	1677-1	EP272Y	WB, IHC, ICC, IP	Hu + Rt +

CCR2/CKR2

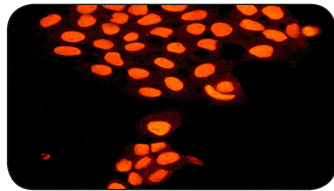
CCR2, C-C chemokine receptor type 2, is a G protein-coupled, seven transmembrane domain receptor protein. A variety of chemokine receptors, including CCR2, can serve as HIV fusion co-factors, making elucidating their specific functions important for more fully describing the process of HIV infection.



Name	Cat#	Clone ID	Applications	Species
CCR2/CKR2	2068-1	E68	IHC, ICC, FC, IP	Hu + Ms +

ILF3

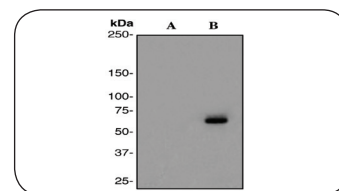
ILF3 (Interleukin enhancer-binding factor 3) is a double-stranded RNA (dsRNA) binding protein that complexes with other proteins, dsRNAs, small noncoding RNAs, and mRNAs to regulate gene expression and stabilize mRNAs. ILF3 regulates protein arginine N-methyltransferase 1 activity and has been suggested to regulate transcription of the IL2 gene during T-cell activation.



Name	Cat#	Clone ID	Applications	Species
ILF3	2684-1	EPR3627	WB, IHC, ICC, IP	Hu +

NF-kappa-B p65 Phospho (pS529)

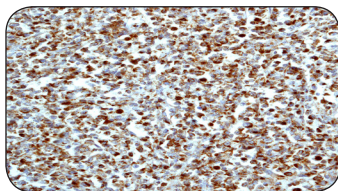
Nuclear factor kappa B (NF-kB) encompasses an important family of inducible transcriptional activators that regulate a wide variety of cellular and viral genes. They play a role as transcription factors in the adaptive immune response, inflammation, and apoptosis. The p65 subunit contains two transactivation domains in the C-terminal region of the protein.



Name	Cat#	Clone ID	Applications	Species
NF-kappa-B p65 Phospho (pS529)	2884-1	EPR2379	WB, FC, IP	Hu +

Alk Phospho (pY1604)

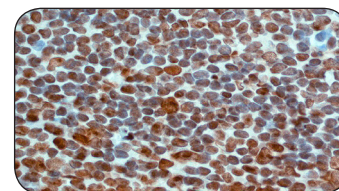
Alk is a novel receptor protein-tyrosine kinase having a putative transmembrane domain and an extracellular domain. The 2;5 chromosomal translocation occurs in most anaplastic large-cell non-Hodgkin's lymphomas arising from activated T lymphocytes. Alk plays an important role in the development of the brain and exerts its effects on specific neurons in the nervous system.



Name	Cat#	Clone ID	Applications	Species
Alk Phospho (pY1604)	1891-1	EP661Y	WB, IHC, IP	Hu +

NPM

NPM (Nucleophosmin), a nucleocytoplasmic shuttling protein with prominent nucleolar localization, regulates the ARF-p53 tumor-suppressor pathway. The nuclear/nucleolar localization of NPM-MLF1 mirrors that of NPM, indicating that NPM trafficking signals direct MLF1 to an inappropriate cellular compartment in myeloid leukemia cells.



Name	Cat#	Clone ID	Applications	Species
NPM	2041-1	EP1848	WB, IHC, FC, IP	Hu +

Immunology

Featured Rabbit Monoclonal Antibodies

Protein Name	Cat #	Clone ID	Applications	Species
Alk Phos (pY1604)	1891-1	EP661Y	WB, IHC, IP	Hu
Bcr	1684-1	EP535Y	WB, IHC, ICC, FC, IP	Hu
C1q (Subunit A)	2464-1	EPR2980Y	WB, IHC, ICC, FC	Hu
C1q (subunit B)	2500-1	EPR2982Y	WB, ICC	Hu
C1q (Subunit C)	2493-1	EPR2984Y	WB, IHC, ICC, FC, IP	Hu
C1q (subunit C)	2577-1	EPR2983	WB, IHC, ICC, FC, IP	Hu
Cbl	1487-1	YE315	WB, IHC, ICC	Hu, Rt
Cbl (C-term)	1486-1	YE323	WB, ICC, FC, IP	Hu
Cbl Phos (pY774)	1160-1	E160	WB, IHC, ICC, FC, IP	Hu
CCR2/CKR2 (N-term)	2068-1	E68	IHC, ICC, IP, FC	Hu, Ms
CCR3/CKR3 (C-term)	2031-1	Y31	WB, IHC, ICC	Hu, Ms
CCR5/CKR5 (C-term)	2164-1	E164	WB, FC	Hu, Ms
CCR7/CKR7	2075-1	E75	WB, FC	Hu, Ms
CCR7/CKR7 (N-term)	2059-1	Y59	WB, IHC, ICC, IP	Hu, Ms, Rt
CCR8/CKR8 (C-term)	2076-1	E76	WB, ICC	Hu, Ms
CCR8/CKR8 (Loop 2)	2077-1	E77	WB, ICC, FC, IP	Hu, Rt
CCR9/CKR9 (N-term)	2099-1	E99	WB, ICC, FC	Hu, Ms
CD81	3102-1	EPR4244	WB, ICC	Hu, Ms, Rt
CXCR4	3108-1	UMB2	IHC	Hu
Cyclin D1	1677-1	EP272Y	WB, IHC, ICC, IP	Hu, Rt
EMTK/ITK/TSK (C-term)	1595-1	Y402	WB, FC, IP	Hu
EMTK/ITK/TSK (N-term)	1625-1	Y401	WB, IHC, FC, IP	Hu
Fc gamma RIIb (C-term)	1787-1	EP888Y	WB, IHC, FC, IP	Hu
Fc gamma RIIb Phos (pY292)	2308-1	EP926Y	WB, IP	Hu
Flt3-L	1839-1	EP1140Y	WB, IHC, ICC, FC	Hu
FOXP1	3210-1	EPR4113	WB, IHC, ICC, IP	Hu, Ms, Rt
FOXP3	3100-1	EPR3002(2)	WB, FC	Hu, Ms, Rt
FRT1	3215-1	EPR3900	WB, ICC, FC, IP	Hu, Ms, Rt
Fyn (p59Fyn)	1562-1	Y303	WB, IHC, ICC	Hu, Ms, Rt
Glycophorin C	2948-1	EPR4116	WB, IHC, ICC, FC, IP	
Glycophorin C	2951-1	EPR4115	WB, ICC, FC, IP	Hu
HLA-Dra	2741-1	EPR3692	WB, IHC, ICC, IP	Hu
HPK1 (N-term)	1654-1	EP630Y	WB, IHC, FC	Hu
ICAM-1	1929-1	EP1442Y	WB, IHC, ICC	Hu
IkappaB alpha	1130-1	E130	WB, IHC, ICC, IP	Hu, Ms, Rt
IKK alpha (N-term)	1615-1	Y463	WB, IHC, ICC, FC, IP	Hu, Ms, Rt
IKK beta	1601-1	Y466	WB, IHC, FC, IP	Hu
IL-1 Beta (Bioactive)	4409-1	EBI-Q26	Bioactive, ELISA	

Protein Name	Cat #	Clone ID	Applications	Species
IL-1 beta (C-term)	1630-1	EP408Y	WB	Hu
IL-1R1	1695-1	EP409Y	WB, FC, IP	Hu, Ms, Rt
IL-2	2645-1	EPR2780	WB, IHC, ICC	Hu
IL-3R beta (C-term)	1850-1	EP1037Y	WB, IHC	Hu
IL-4	2177-1	EPR1118Y	WB, ICC	Hu
IL-6	1457-1	E457	WB	Hu
IL-8	1856-1	EP1117Y	WB	Hu
IL-10	1889-1	EP1115Y	WB	Hu, Ms, Rt
IL-13	2759-1	EP3266	WB, ICC	Hu
IL-15	2110-1	EPR1542Y	WB	Hu
IL-17	1656-1	EP434Y	WB	Hu, Ms
IL-18BP	1893-1	EP1088Y	WB, IHC, FC	Hu, Rt
ILF3	2684-1	EPR3627	WB, IHC, ICC, IP	Hu
Lysozyme C	3349-1	EPR2994(2)	WB, IHC, ICC, IP	Hu, Ms
MALT1 / MLI1 (N-term)	1664-1	EP603Y	WB, FC, IP	Hu
MHC class 1	1913-1	EP1395Y	WB, IHC, ICC, FC, IP	Hu, Ms, Rt
MHC class 1	2307-1	EPR1394Y	WB, IHC, ICC, FC	Hu
MIP-1 alpha (C-term)	1733-1	EP493Y	WB	Hu
MIP-1 beta/CCL4 (C-term)	1737-1	EP494Y	WB	Hu
Nck	1622-1	Y531	WB, IHC, ICC, FC, IP	Hu, Ms, Rt
NF-κB p65	2229-1	EP2161Y	WB, ICC, FC	Hu
NF-κB p65 Phos (pS529)	2884-1	EPR2379	WB, FC, IP	Hu
NF-κB p65 Phos (pS536)	2220-1	EP2294Y	WB, IP	Hu
NF-κB (p105/p50)	1559-1	E381	WB, IHC, ICC, FC	Hu, Ms, Rt
NF-κB (p65 subunit)	1546-1	E379	WB, IHC, ICC, FC, IP	Hu, Ms
NPM (N-term)	2041-1	EP1848Y	WB, IHC, FC, IP	Hu
SHP-1 (C-term)	1606-1	Y476	WB, IHC, FC, IP	Hu, Ms, Rt
TNF alpha	1836-1	EP1085Y	WB	Hu
TNF Alpha	4405-1	EBI-858	Bioactive, ELISA	Hu
TNF beta	1838-1	EP1113Y	WB	
TNFAIP3	2644-1	EPR2663	WB, IHC, ICC, FC	Hu
TNFR1	2348-1	EP1651AY	WB, FC	Hu
TRAF3	2107-1	EP1730Y	WB, IHC, ICC, FC	Hu
TRAF4	3226-1	EPR1729	WB, ICC, FC	Hu, Ms
TRAF6	1660-1	EP591Y	WB, IHC, ICC, FC, IP	Hu, Ms, Rt
Vav	1746-1	EP482Y	WB, ICC, IP	Hu, Rt
Vav Phos (pY174)	2133-1	EP510Y	WB, ICC	Hu

Please visit www.epitomics.com for a updated complete listing of all immunology antibodies



877-772-2622 (Toll Free US and Canada)
650-583-6688 (Domestic and Int'l)



info@epitomics.com



www.epitomics.com

Complete datasheets and images for every antibody available on-line.

EPITOMICS
Better Antibodies · Better Science