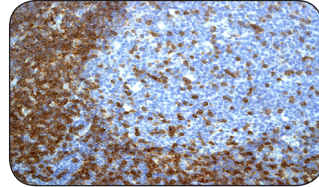


Featured Rabbit Monoclonal Antibodies

CD3

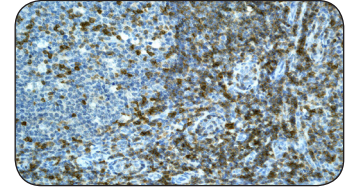
CD3 is composed of five invariant polypeptide chains that associate to form three dimers. It is a complex of proteins that associates directly with the T cell antigen receptor (TCR). The epsilon polypeptide plays an essential role in T-cell development. Defects in this protein cause immunodeficiency.



Name	Cat#	Clone ID	Applications	Species
CD3	1774-1	EP449E	WB, IHC, IP	Hu +

CD5

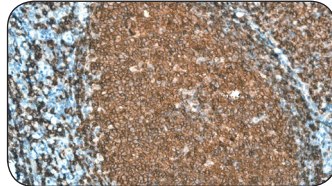
CD5 (Lymphocyte antigen T1/Leu-1) is a transmembrane glycoprotein which has been implicated as a receptor in the regulation of T-cell proliferation. CD5 is expressed by T cell leukemia, lymphomas, and activated T cells. A ligand for CD72/LYB-2, CD5 has been linked to negative regulation of T cell and B cell receptors signaling.



Name	Cat#	Clone ID	Applications	Species
CD5	2541-1	EP2952	WB, IHC, ICC, IP	Hu +

CD20

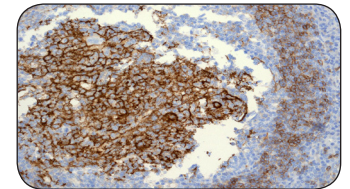
CD20 is a human B lymphocyte surface molecule expressed on both normal and malignant cells that functions as a receptor during B cell activation. It is also involved in the regulation of cell progression in B lymphocytes as either a component or a regulator of intracellular calcium levels. Monoclonal antibodies against CD20 are used to treat B-cell non-Hodgkins lymphoma.



Name	Cat#	Clone ID	Applications	Species
CD20	1632-1	EP459Y	WB, IHC, FC, IP	Hu +

CD23

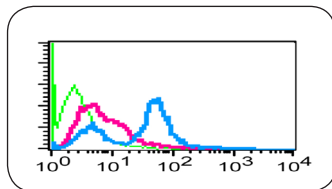
CD23, a type II transmembrane glycoprotein, is a key molecule for B-cell activation and growth and functions as a receptor for IgE. It plays essential roles in the regulation of IgE production and in the differentiation of B-cells. CD23 expression is upregulated in B cell chronic lymphocytic leukemia and in some centroblastic/centrocytic lymphoma cases.



Name	Cat#	Clone ID	Applications	Species
CD23	2685-1	EPR3617	WB, IHC, FC	Hu +

ZAP-70 Phospho (pY292) DyLight® 488

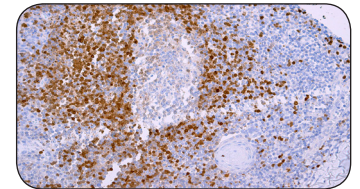
ZAP70, a Syk-family protein tyrosine kinase (PTK), plays a critical role in mediating T cell signal transduction in response to T cell receptor (TCR) activation. ZAP70 is also essential for thymocyte development. Mutations in this protein cause selective T-cell defect, a severe combined immunodeficiency disease characterized by a selective absence of CD8-positive T-cells.



Name	Cat#	Clone ID	Applications	Species
ZAP-70 Phospho (pY292) DyLight® 488	4515-1	EPR1073	FC	Hu +

TCL1

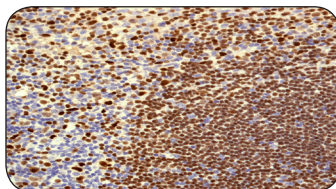
TCL1 (T-cell leukemia/lymphoma protein 1A) enhances the phosphorylation and activation of AKT1, AKT2 and AKT3. TCL1 promotes nuclear translocation of AKT1 and enhances cell proliferation, stabilizes mitochondrial membrane potential and promotes cell survival. It is preferentially expressed early in T- and B-lymphocyte differentiation.



Name	Cat#	Clone ID	Applications	Species
TCL1	2859-1	EPR3949	WB, IHC, ICC, FC	Hu +

Transcription factor PU.1

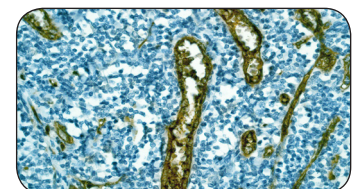
Transcription factor PU.1 is a member of the Ets family of transcription factors and is required for the development of multiple hematopoietic lineages. It plays a pivotal role in normal myeloid differentiation, and regulates the expression of immunoglobulin and other proteins that are important for B-cell development. Transcription factor PU.1 acts as tumor suppressors in leukemia.



Name	Cat#	Clone ID	Applications	Species
Transcription factor PU.1	2480-1	EPR3158Y	WB, IHC, FC	Hu +

B7-2/CD86 DyLight® 488

B7-2 (CD86) is an important costimulatory molecule for the priming and activation of naive and memory T cells, respectively. Binding of this protein with cytotoxic T-lymphocyte-associated protein 4 negatively regulates T-cell activation and diminishes the immune response



Name	Cat#	Clone ID	Applications	Species
B7-2/CD86 DyLight® 488	4512-1	EP1158Y	FC	Hu +

Immunology B cell & T cell

Featured Rabbit Monoclonals Antibodies

Protein Name	Cat #	Clone ID	Applications	Species
B7-1/CD80	1859-1	EP1155Y	WB, IHC, ICC, FC	Hu, Ms, Rt
B7-2/CD86	1858-1	EP1158Y	WB, IHC, ICC, FC, IP	Hu, Ms, Rt
B7-2/CD86 DyLight® 488	4512-1	EP1158Y	FC	Hu
B7-H4	2516-1	EP1165	WB, IHC, ICC, IP	Hu, Ms, Rt
Bcl-2	1017-1	E17	WB, IHC, ICC, IP, FC	Hu, Ms
BLNK	1597-1	Y491	WB, IHC, IP	Hu, Ms
Btk (C-term)	1599-1	Y440	WB, IP	Hu
Btk Phos (pY223)	2207-1	EP420Y	WB, IP	Hu
Btk Phos (pY551)	1685-1	EP267Y	WB, ICC	Hu
CD1a	2539-1	EP3091	WB, ICC	Hu
CD1a	2874-1	EP3622	WB, IHC	Hu
CD3 epsilon	1501-1	E272	IHC, ICC, IP	Hu
CD3 epsilon	1774-1	EP449E	WB, IHC, IP	Hu
CD3 gamma	3256-1	EPR4517	WB, IHC, ICC, IP	Hu, Ms
CD3 gamma	3255-1	EPR4516	WB, IHC, ICC	Hu
CD3 zeta (C-term)	1713-1	EP286Y	WB, ICC, FC	Hu
CD3 zeta Phos (pY142)	2280-1	EP265(2)Y	WB, ICC, IP	Hu
CD3 zeta Phos (pY83)	2317-1	EP776(2)Y	WB, ICC, IP	Hu
CD4	2924-1	EPR3942	WB, ICC	Hu
CD5	2541-1	EP2952	WB, IHC, ICC, IP	Hu
CD7	3420-1	EPR4242	WB, IHC, IP	Hu
CD8 (C-term)	1872-1	EP1150Y	WB, IHC, ICC	Hu, Ms, Rt
CD10	2545-1	EP2998	WB, ICC	Hu
CD10	2569-1	EPR2997	WB, FC	Hu, Ms, Rt
CD20 (C-term)	1632-1	EP459Y	WB, IHC, FC, IP	Hu
CD20 DyLight® 488	4504-1	EP459Y	FC	Hu
CD21	2546-1	EP3093	WB, IHC, ICC, FC, IP	Hu, Ms
CD22	1638-1	EP498Y	WB	Hu, Ms, Rt
CD22 Phos (pY762)	1778-1	EP727Y	WB, IP	Hu
CD22 Phos (pY807)	1621-1	Y505	WB	Hu
CD22 Phos (pY822)	1610-1	Y506	WB, FC	Hu
CD22 Phos (pY842)	1620-1	Y507	WB	Hu
CD23	2685-1	EPR3617	WB, IHC, FC	Hu
CD38	2935-1	EPR4106	WB, IHC, ICC, FC	Hu
CD39	2827-1	EPR3678(2)	WB	Hu, Ms, Rt
CD40 (Bioactive)	4402-1	EBI-19-21	ELISA, FC, FAssays	Hu
CD45	1577-1	Y321	WB, IP	Hu
CD45 (C-term)	1691-1	EP322Y	WB, IHC, FC	Hu

Protein Name	Cat #	Clone ID	Applications	Species
CD72	2735-1	EPR3571	WB, ICC	Hu
CD74	2905-1	EPR4065	WB, IHC, ICC, IP	Hu
CD74	2920-1	EPR4064	WB, IHC, ICC	Hu
CD79a/mb-1	2613-1	EP3618	WB, IHC, FC	Hu
CD90	2694-1	EPR3132	WB, IHC, ICC	Hu, Rt
CD90	2695-1	EPR3133	WB, IHC, ICC	Hu
CD99	2429-1	EPR3097Y	WB, IHC, ICC, IP	Hu
CD99	2873-1	EPR3096	WB, IHC, ICC, FC, IP	Hu
LAT	1499-1	Y109	WB, IHC, FC, IP	Hu
LAT Phos (pY191)	1225-1	E225	WB, IHC, ICC, IP	Hu, Ms, Rt
LAT Phos (pY200)	2274-1	EP983(2)Y	WB, ICC	Hu
LCK Phos (pY505)	2217-1	EP2158Y	WB	Hu, Ms
LCK/p56	1515-1	Y123	WB, IHC, ICC, FC, IP	Hu
LSP1	2987-1	EPR3160	WB, IHC	Hu
Lyn	1619-1	Y497	WB, IP	Hu
Lyn Phos (pY396)	1645-1	EP503Y	WB, FC	Hu
Lyn Phos (pY507)	1659-1	EP504Y	WB, IHC, IP	Hu, Ms, Rt
OCA-B	2553-1	EP3300	WB, IHC, ICC	Hu
OCT'2	1663-1	EP543Y	WB, IP	Hu
OCT'2	1583-1	Polyclonal	WB, IHC, FC	Hu
OCT'2	2652-1	EPR542	WB, IHC, ICC, FC	Hu
OX40	2359-1	EPR17Y	WB	Hu
OX40L	2369-1	EP1168Y	WB	Hu
RANTES	3107-1	EPR1359	WB, ICC	Hu
RUNX1	2593-1	EPR3099	WB, IHC, ICC, FC, IP	Hu, Ms
SLP-76	3383-1	EPR2549(2)	WB, IHC, ICC	Hu, Ms, Rt
SLP-76 Phos (pY113)	2382-1	EPR2851	WB, FC	Hu
SLP-76 Phos (pY145)	2419-1	EP2853Y	WB, ICC, FC	
Syk	1688-1	EP573Y	WB, IHC, ICC	Hu
TCL1	2859-1	EPR3949	WB, IHC, ICC, FC	Hu
Transcription factor PU.1	2479-1	EPR3159Y	WB, IHC, ICC, FC	Hu
Transcription factor PU.1	2480-1	EPR3158Y	WB, IHC, FC	Hu
TRAP cleavage (CD40 Ligand)	1845-1	EP462E	WB, FC	Hu, Ms
ZAP-70	1267-1	E267	WB, FC, IP	Hu, Ms, Rt
ZAP-70	2869-1	ER227(2)	WB, IHC, ICC, IP	Hu
ZAP-70 (C-term)	1491-1	YE291	WB, IHC, ICC, FC, IP	Hu
ZAP-70 Phos (pY492)	2215-1	EP2291Y	WB, IP	Hu

Please visit www.epitomics.com for a updated complete listing of all immunology antibodies

☎ 877-772-2622 (Toll Free US and Canada)
650-583-6688 (Domestic and Int'l)

@ info@epitomics.com

🌐 www.epitomics.com

Complete datasheets and images for every antibody available on-line.

EPITOMICS[®]
Better Antibodies • Better Science