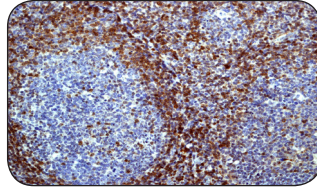


Cancer Targets 2

Featured Rabbit Monoclonal Antibodies

Bcl-2

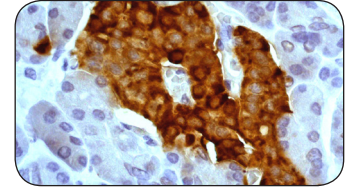
The Bcl-2 family of proteins regulates apoptosis by controlling mitochondrial permeability and release of cytochrome c. Bcl-2 is an anti-apoptotic protein that resides in the outer mitochondrial wall and inhibits release of cytochrome c (1). Over-expression of Bcl-2 has been shown to promote cell survival by suppressing apoptosis.



Name	Cat#	Clone ID	Applications	Species
Bcl-2	1017-1	E17	WB, IHC, ICC, FC, IP	Hu + Ms +

Chromogranin A

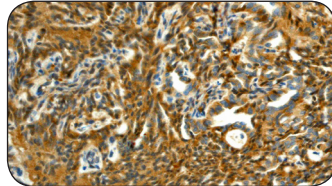
Chromogranin A (CgA) is an 86 kDa protein that is the major member of the granin family of acidic secretory glycoproteins located in neuroendocrine cells. Chromogranin A levels which reflect neuroendocrine differentiation of prostatic carcinoma may have a diagnostic, therapeutic and prognostic role in the management of prostate cancer patients.



Name	Cat#	Clone ID	Applications	Species
Chromogranin A	1809-1	EP1031Y	WB, IHC, IP	Hu +

Calretinin

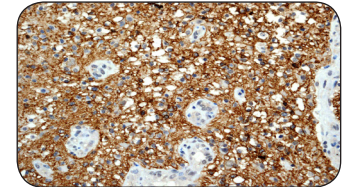
Calretinin is a calcium binding protein that belongs to calbindin family. It is mainly found in neuronal tissue, high expressed in auditory neurons. It has been implicated in as a calcium buffer, calcium sensor, and as a regulator of apoptosis. Calretinin is considered as a specific marker of mesothelial cells; it is the only marker that has the utility in distinguishing between sarcomatoid mesotheliomas and sarcomatoid renal cell carcinomas.



Name	Cat#	Clone ID	Applications	Species
Calretinin	2624-1	EP1798	WB, IHC, ICC, FC	Hu + Ms + Rt +

CD56/NCAM

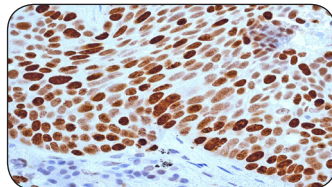
CD56 is a homophilic binding glycoprotein belonging to immunoglobulin (Ig) superfamily. It is commonly found on the surface of neurons, NK cells, glia, and neuroendocrine tissues, and it is involved in synaptic plasticity, neurodevelopment, and neurogenesis.



Name	Cat#	Clone ID	Applications	Species
CD56/NCAM	2690-1	EPR2566	WB, IHC, ICC, FC, IP	Hu +

Ki-67

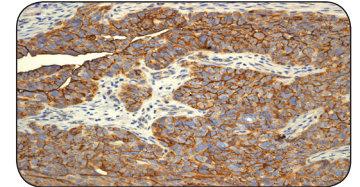
Ki-67 antigen is a nuclear antigen specifically associated with cell proliferation. Ki-67 is expressed in all proliferating cells which are in the active phases of the cell cycle (late G1, S, G2, and mitosis). Due to the fact that Ki-67 can be used to determine the growth fraction, it is considered an important marker in human tumor diagnostics and prognostics.



Name	Cat#	Clone ID	Applications	Species
Ki-67	2746-1	EPR3610	WB, IHC, ICC, FC	Hu +

CA 125

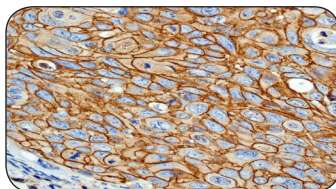
CA 125 (Carcinoma antigen 125) is a high molecular weight tumor antigen that is the basis for a widely used serum assay for the monitoring of patients with ovarian epithelial cancer. Binding of CA125 to membrane-bound mesothelin mediates heterotypic cell adhesion, which may contribute to the metastasis of ovarian cancer to the peritoneum by initiating cell attachment to the mesothe-



Name	Cat#	Clone ID	Applications	Species
CA 125	2826-1	EPR1020(2)	WB, IHC, ICC	Hu +

EGFR

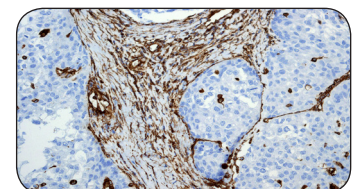
EGFR (Epidermal growth factor receptor) is a 175 kDa transmembrane glycoprotein receptor tyrosine kinase that is involved in diverse cellular functions including cell proliferation, differentiation, motility, survival and in tissue development. Mutations in EGFR are associated with lung cancer.



Name	Cat#	Clone ID	Applications	Species
EGFR	1902-1	EP38Y	WB, IHC, ICC, IP	Hu + Ms + Rt +

Vimentin

Vimentin is the most common member of intermediate filament (IF) family and one of the main components in cytoskeleton structure. Vimentin is essential in the role of cell integrity and cytoskeletal stability. Vimentin expression may provide useful insights into mechanisms of invasion and/or breast cancer cell progression.



Name	Cat#	Clone ID	Applications	Species
Vimentin	2707-1	EPR3776	WB, IHC, ICC, FC	Hu + Ms + Rt +

Cancer Targets 2

Featured Rabbit Monoclonals Antibodies

Protein Name	Cat #	Clone ID	Applications	Species
LUNG CANCER				
B-Raf	1647-1	EP152Y	WB, IHC, FC, IP	Hu, Ms, Rt
Chromogranin A	1809-1	EP1031Y	WB, IHC, IP	Hu
c-Kit/CD117	1522-1	Y145	WB, IHC	Hu
EGFR	1902-1	EP38Y	WB, IHC, ICC, IP	Hu, Ms, Rt
EGFR Phospho (pY1068)	1727-1	EP774Y	WB, IHC, ICC, IP, FC	Hu
Met	1996-1	EP1454Y	WB, IHC, ICC	Hu
Enolase 2 gamma (NSE)	2588-1	EPR3377	WB, IHC, ICC, FC	Hu, Ms, Rt
p53	1005-1	Y5	WB, IHC, ICC, IP	Hu Rt
Paxillin	1500-1	Y113	WB, IHC, ICC, IP	Hu, Ms, Rt
Ki-67	2746-1	EPR3610	WB, IHC, ICC, FC	Hu
OVARIAN CANCER				
CA 125	2826-1	EPR1020(2)	WB, IHC, ICC	Hu
HIF-1 alpha	2015-1	EP1215Y	WB, IHC, ICC	Hu Rt
N-Cadherin	2019-1	EPR1792Y	WB, IHC, ICC, FC, IP	Hu, Ms, Rt
CERVICAL CANCER				
CytokerRtin 5	2290-1	EPR1600Y	WB, IHC, ICC, IP	Hu
CytokerRtin 6	1951-1	EPR1603Y	WB, IHC, ICC, IP	Hu
MCM2	2929-1	EPR4120	WB, IHC, ICC, IP	Hu, Ms
MCM5	2380-1	EP2682Y	Wb, IHC, ICC, FC, IP	Hu
EGFR	1902-1	EP38Y	WB, IHC, ICC, IP	Hu, Ms, Rt
BRAIN TUMORS				
CD56/NCAM	2690-1	EPR2566	WB, IHC, ICC, FC, IP	Hu
Chromogranin A	1809-1	EP1031Y	WB, IHC, IP	Hu
GFAP	1665-1	EP672Y	WB, IHC, ICC, IP	Hu Rt
Neurofilament 66	1674-1	EP676Y	WB, IHC, ICC, FC, IP	Hu Rt
NF-H	1707-1	EP673Y	WB, IHC, ICC	Hu, Ms, Rt
Neurofilament M	2700-1	EP2460	WB, IHC, ICC, IP	Hu
NGF Receptor	1812-1	EP1039Y	WB, IHC, ICC, IP	Hu, Ms, Rt
Enolase 2 gamma	2588-1	EPR3377	WB, IHC, ICC, FC	Hu, Ms, Rt
OLIG2	2904-1	EPR2673	WB, IHC, IP	Hu, Ms
S100 beta (C-term)	2017-1	EP1576Y	WB, IHC, IP	Hu, Ms, Rt
MESOTHELIOMA				
Calretinin	2624-1	EP1798	WB, IHC, ICC, FC	Hu, Ms, Rt
Osteopontin	2671-1	EPR3688	WB, IHC, ICC, FC	Hu, Ms
Wilm's Tumor	2797-1	CAN-R9 (IHC)-56-2	WB, IHC	Hu, Ms
THYROID GLAND CANCER				
Thyroglobulin	2653-1	EPR3614	WB, IHC, IP	Hu
Galectin-3	2401-1	EP2775Y	WB, IHC, ICC, FC	Hu

Protein Name	Cat #	Clone ID	Applications	Species
LYMPHOMA				
Alk Phospho (pY1604)	1891-1	EP661Y	WB, IHC, IP	Hu
Bcl-2	1017-1	E17	WB, IHC, ICC, IP, FC	Hu, Ms
CD3 epsilon	1774-1	EP449E	WB, IHC, IP	Hu
CD3 gamma	3256-1	EPR4517	WB, IHC, ICC, IP	Hu, Ms
CD20 (C-term)	1632-1	EP459Y	WB, IHC, FC, IP	Hu
CD21	2546-1	EP3093	WB, IHC, ICC, FC, IP	Hu, Ms
CD23	2685-1	EPR3617	WB, IHC, FC	Hu
CD5	2541-1	EP2952	WB, IHC, ICC, IP	Hu
CD79a/mb-1	2613-1	EP3618	WB, IHC, FC	Hu
Cyclin D1	1677-1	EP272Y	WB, IHC, ICC, IP	Hu Rt
CD1a	2874-1	EP3622	WB, IHC	Hu
ZAP-70	2869-1	ER227(2)	WB, IHC, ICC, IP	Hu
CD11c / ITGAX (C-term)	1975-1	EP1347Y	WB, IHC, ICC, IP	Hu
Transcription factor PU.1	2480-1	EPR3158Y	WB, IHC, FC	Hu
OCA-B	2553-1	EP3300	WB, IHC, ICC	Hu
OCT'2	2652-1	EPR542	WB, IHC, ICC, FC	Hu
TCL1	2859-1	EPR3949	WB, IHC, ICC, FC	Hu
LSP1	2987-1	EPR3160	WB, IHC	Hu
NPM	2041-1	EP1848Y	WB, IHC, FC, IP	Hu
FOXP1	3210-1	EPR4113	WB, IHC, ICC, IP	Hu, Ms, Rt
LAT	1499-1	Y109	WB, IHC, FC, IP	Hu
Syk	1688-1	EP573Y	WB, IHC, ICC	Hu
RUNX1	2593-1	EPR3099	WB, IHC, ICC, FC, IP	Hu, Ms
CD44	1998-1	EPR1013Y	WB, IHC, ICC, FC	Hu
SARCOMA, SMOOTH MUSCLE & SOFT TISSUE TUMORS				
Caldesmon (CaM)	1089-1	E89	WB, IHC, ICC, IP, FC	Hu, Ms, Rt
Calponin-1	1806-1	EP798Y	WB, IHC, ICC	Hu, Ms, Rt
Caveolin-1	1249-1	E249	WB, IHC, ICC	Hu, Ms
CD31/PECAM-1	2530-1	EP3095	WB, IHC, FC	Hu
CD34	2150-1	EP373Y	WB, IHC, ICC, FC, IP	Hu
CD99	2429-1	EPR3097Y	WB, IHC, ICC, IP	Hu
Desmin	1466-1	Y66	WB, IHC	Hu, Ms, Rt
EWSR1 / EWS	3320-1	EPR4648	WB, IHC, ICC	Hu, Ms, Rt
Myoglobin	2472-1	EP3081Y	WB, IHC, IP	Hu, Ms, Rt
Vimentin	2707-1	EPR3776	WB, IHC, ICC, FC	Hu, Ms, Rt
MELANOMA				
CD146	2505-1	EPR3208	WB, IHC, ICC, FC, IP	Hu, Ms, Rt
MART-1 (N-term)	1989-1	EP1422Y	WB, IHC	Hu
S100 beta (C-term)	2017-1	EP1576Y	WB, IHC, IP	Hu, Ms, Rt
SOX10	2931-1	EPR4007	WB, IHC	Hu, Ms, Rt

Please visit www.epitomics.com for a updated complete listing of all validated antibodies



877-772-2622 (Toll Free US and Canada)
650-583-6688 (Domestic and Int'l)



info@epitomics.com



www.epitomics.com

Complete datasheets and images for every antibody available on-line.

EPITOMICS
Better Antibodies · Better Science