

**Akt1 Phospho (pT308) Rabbit Monoclonal Antibody
Product Data Sheet**

Catalog # 2214-1

Clone ID: EP2107Y Lot #: Please refer to the vial

Quantity: 100 µl

Type: Rabbit Monoclonal IgG

Species Cross-reactivity*: Human Mouse Rat

Applications: WB IHC ICC Flow Cytometry IP

Molecular Wt.: 60 kDa

UniProt ID: P31749

*Species cross-reactivity is based on WB analysis

Background: Akt1/PKBa is a Ser/Thr protein kinase, whose kinase activity plays a key role in various cellular functions, including apoptosis, glycogen synthesis, and cell growth. Akt1/PKBa is activated by various growth and survival factors (1). Phosphorylation on Thr308, Ser473 and Tyr474 is required for full activity. Akt1/PKBa inhibits apoptosis by phosphorylating and inactivating several targets, including caspase-9 (2). Akt1/PKBa regulates glycogen synthesis by phosphorylating and inactivating glycogen synthase kinase-3a and b (3, 4). Three mammalian Akt1/PKBa isoforms have been identified.

Specificity: A phospho specific peptide corresponding to residues surrounding Threonine 308 of human Akt1 was used as immunogen. The antibody detects Akt1 phosphorylated at Threonine 308.

Storage Conditions: Store at -20 °C. Buffer: 50 mM Tris-Glycine (pH 7.4), 0.15 M NaCl, 40% Glycerol, 0.01% sodium azide and 0.05% BSA. Stable for 12 months from date of receipt.

Recommended Dilutions:

WB: 1:5,000 – 10,000

Please visit www.epitomics.com for recommended protocols

Background References:

1. Burgering, B.M. and P.J. Coffey. *Nature* 376: 599–602, 1995.
2. Cardone, M.H., et al. *Science* 282: 1318–1321, 1998.
3. Hajdich, E., et al. *FEBS Lett.* 492: 199–203, 2001.
4. Cross, D.A., et al. *Nature* 378: 785–789, 1995.

Related Products:

Antigen	Clone	Catalog #
Akt1/PKBa	Y90	1080-1
Akt1/PKBa	E45	1085-1
Akt1/PKBa	E45W	1086-1
Akt1/PKBa (pS473)	EP2109Y	2118-1

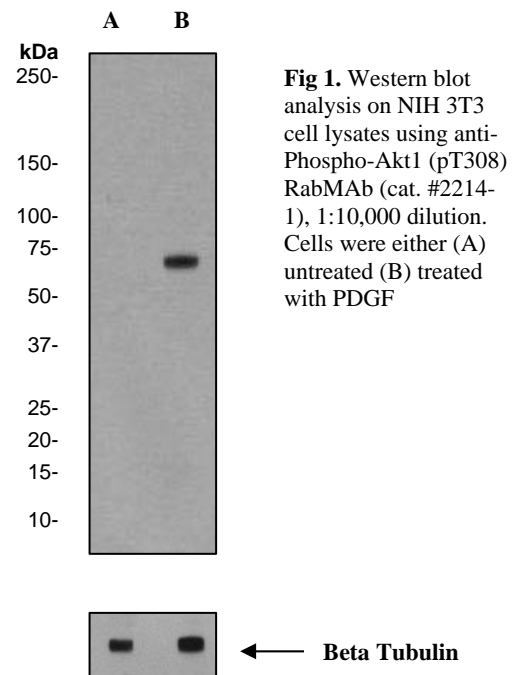


Fig 1. Western blot analysis on NIH 3T3 cell lysates using anti-Phospho-Akt1 (pT308) RabMAb (cat. #2214-1), 1:10,000 dilution. Cells were either (A) untreated (B) treated with PDGF

Product QC'd by: _____

For research use only. Not for use in diagnostic or therapeutic applications.

This product was manufactured under US Patents No. 5,675,063 and 5,599,681. For a complete list of protocols and available related products, please visit www.epitomics.com.