

**Crk / p38 (pY221) Phospho Rabbit Monoclonal Antibody
Product Data Sheet**

Catalog # 2132-1

Clone ID: EPR269Y Lot #: Please refer to the vial
Quantity: 100 µl
Type: Rabbit Monoclonal IgG
Species Cross-reactivity: Human Mouse Rat
Applications: WB IHC ICC Flow Cytometry IP
Molecular Wt.: 38 kDa
UniProt ID: P46108

Background: Crk (p38) are adaptor proteins, composed mostly of SH2 and SH3 domains, which play a key role in cellular signaling by mediating the construction of protein complexes and also by managing cell proliferation, differentiation, and migration (1). They are critical integrators of upstream signals for cell invasion and migration in human cancer cell lines. Crk is believed to be a regulator of invasive responses because increased levels of the protein have been observed in multiple human cancers (2). In vivo studies have demonstrated that decreased levels of Crk remarkably inhibits tumor formation and its invasive growth (3). Crk associates with ERM family proteins (including ezrin, radixin, and moesin), activates RhoA, and promotes cell motility toward hyaluronic acid (4).

Specificity: A phospho specific peptide corresponding to regions surrounding Tyrosine 221 was used as an immunogen. This antibody detects proteins phosphorylated at Y221.

Storage Conditions: Store at -20 °C. Buffer: 50 mM Tris-Glycine (pH 7.4), 0.15 M NaCl, 40% Glycerol, 0.01% sodium azide and 0.05% BSA. Stable for 12 months from date of receipt.

Recommended Dilutions:

WB: 1:1000 – 2000

ICC: 1:50 -100

Please visit www.epitomics.com for recommended protocols

Background References:

1. Nishihara H, et al. Cancer Lett (1):55-61, 2002
2. Watanabe T, et al. Mol Cancer Res. (7):499-510, 2006
3. Rodrigues SP, et al. Mol Cancer Res. (4):183-94, 2005
4. Tsuda MJ, et al. Biol Chem. (45):46843-50, 2004

Related Products:

Antigen	Clone	Catalog #
Crk/p38	EP242Y	1779-1
Crk L	Y244	1524-1

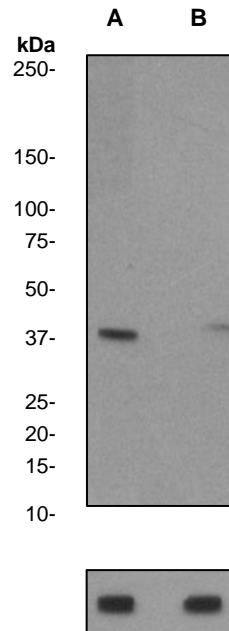


Fig 1. Western blot analysis on K562 cell lysates using anti-Phospho-Crk/p38 (pY221) RabMAb (cat. #2132-1), 1:2000 dilution. Cells were either (A) untreated (B) treated with AP.

Beta Actin

Product QC'd by: 

For research use only. Not for use in diagnostic or therapeutic applications.

This product was manufactured under US Patents No. 5,675,063 and 5,599,681. For a complete list of protocols and available related products, please visit www.epitomics.com.