

**PUMA (C-term) Rabbit Monoclonal Antibody
Product Data Sheet**

Catalog # 1652-1

Clone ID: EP512Y **Lot #:** please refer to vial
Quantity: 100 µl
Type: Rabbit Monoclonal IgG
Species Cross-reactivity: Human Mouse Rat
Applications: WB IHC ICC Flow Cytometry IP
Molecular Wt.: 18-24 kDa
UniProt ID: Q9BXH1

Background: PUMA, (p53 upregulated modulator of apoptosis), is activated by p53 in cells undergoing p53-induced apoptosis (1-2). Localized in the mitochondria PUMA induces cytochrome c release and activates the rapid induction of programmed cell death. PUMA interacts with Bcl2 (3), Bcl-XL, Bcl2-like-1 protein and promotes mitochondrial translocation and multimerization of BAX. PUMA also plays a role in mediating p53-induced cell death through the cytochrome c/APAF1-dependent pathway (2). Two isoform of PUMA are known; PUMA-alpha and PUMA-beta.

Specificity: A synthetic peptide corresponding to residues in the C-term of human PUMA was used as immunogen. This antibody is predicted to detect both isoforms based on sequence analysis. The isoform B is ~18 kDa and isoform A is ~24kDa. Isoform B is primarily recognized on the western blot gel.

Storage Conditions: Store at -20 °C. Buffer: 50 mM Tris-Glycine (pH 7.4), 0.15 M NaCl, 40% Glycerol, 0.01% sodium azide and 0.05% BSA. Stable for 12 months from date of receipt.

Recommended Dilutions:

WB: 1:1,000-5,000
IHC: 1:100-250
ICC: 1:250-500
Flow Cytometry: 1:30
IP: 1:50

Background References:

1. Yu, J., Zhang, L., Hwang, P.M., Kinzler, K.W. and Vogelstein, B., 2001. Mol. Cell 7, pp. 673-682.
2. Nakano, K. and Vousden, K.H., 2001. Mol. Cell 7, pp. 683-694.
3. Han, J. et al. 2001. Proc. Natl. Acad. Sci. USA 98, pp. 11318-11323.

Product QC'd by: _____

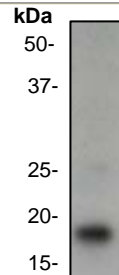


Fig 1. Western blot analysis on K562 cell lysate using anti-PUMA (C-term) RabMAb (cat. # 1652-1), dilution 1:5,000.

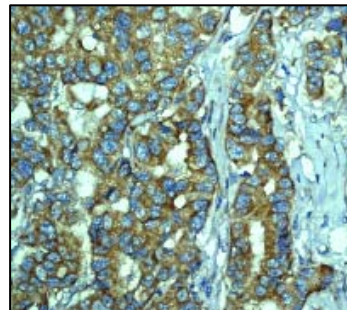


Fig 2. Immunohistochemical analysis of paraffin-embedded human breast carcinoma using anti-PUMA (C-term) RabMAb (cat. # 1652-1).

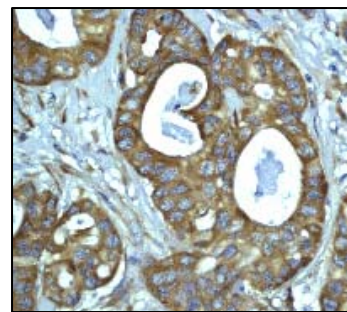


Fig 3. Immunohistochemical analysis of paraffin-embedded human ovary carcinoma using anti-PUMA (C-term) RabMAb (cat. # 1652-1).

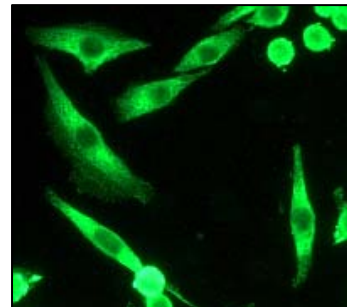


Fig 4. Immunofluorescent staining of HeLa cells using anti-PUMA (C-term) RabMAb (cat. # 1652-1).

For research use only. Not for use in diagnostic or therapeutic applications.

This product was manufactured under U.S. Patent No. 5,675,063. For a complete list of protocols and available related products, please visit www.epitomics.com.