

**Ubiquitin (C-term) Rabbit Monoclonal Antibody  
Product Data Sheet**

**Catalog # 1646-1**

Clone ID: EP296Y      Lot #: YD011509  
Quantity: 100 µl  
Type: Rabbit Monoclonal IgG  
Species Cross-reactivity:  Human  Mouse  Rat  
Applications:  WB  IHC  ICC  Flow Cytometry  IP  
Molecular Wt.: 8.5 kDa  
UniProt ID: P62988

**Background:** Ubiquitin (originally ubiquitous immunopoeitic polypeptide-UBIP) is an 8.5 kDa protein highly conserved among eukaryotic species (1). Ubiquitin acts through its post-translational attachment (ubiquitinylation) to other proteins, where these modifications alter the function, location or trafficking of the protein and targets it for destruction by the 26S proteasome. Ubiquitinylation also termed ubiquination, is an ATP-dependent process that involves the action of at least three enzymes: E1 (activating enzyme), E2 (conjugation enzyme) and E3 (ligase) working sequentially (2-4). This process is an important regulatory tool that controls the concentration of key signaling and regulatory proteins as well as removing damaged, misfolded or mutant proteins (5).

**Specificity:** A synthetic peptide corresponding to residues in the C-term of human Ubiquitin was used as immunogen.

**Storage Conditions:** Store at -20 °C. Buffer: 50 mM Tris-Glycine (pH 7.4), 0.15 M NaCl, 40% Glycerol, 0.01% sodium azide and 0.05% BSA. Stable for 12 months from date of receipt.

**Recommended Dilutions:**

WB: 1:1,000  
IHC: 1:250-500

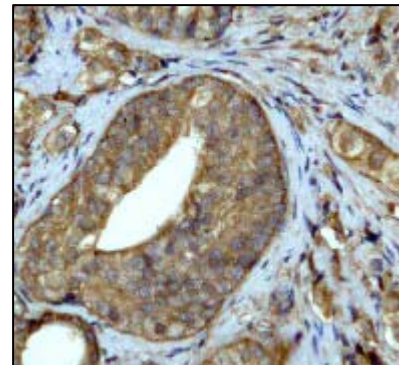
**Background References:**

1. Goldstein, G., Scheid, M., Hamerling, U., Boyse, E.A., Schlesinger, D.H. & Niall, D. (1975) Proc. Natl. Acad. Sci. USA 72 1-15.
2. Hatfield, P.M. & Vierstra, R.D. (1992) J. Biol. Chem. 267 14799-14803.
3. Sullivan, M.L. & Vierstra, R.D. (1991) J. Biol. Chem. 266 23878-23885.
4. Gonen, H., et al. (1996) J Biol Chem 271 302-310.
5. Hatakeyama S., Nakayama K.I. Biochem. Biophys. Res. Commun. 302: 635-645 (2003).

kDa  
100-  
75-  
50-  
37-  
25-  
20-  
15-



**Fig 1.** Western blot analysis on Hela cell lysate using anti-Ubiquitin (C-term) RabMAb (cat. # 1646-1), dilution 1:2,000.



**Fig 2.** Immunohistochemical analysis of paraffin-embedded human prostate adenocarcinoma using anti-Ubiquitin (C-term) RabMAb (cat. # 1646-1).

Product QC'd by: \_\_\_\_\_

**For research use only. Not for use in diagnostic or therapeutic applications.**

*This product was manufactured under U.S. Patent No. 5,675,063. For a complete list of protocols and available related products, please visit [www.epitomics.com](http://www.epitomics.com).*