

**SGK Rabbit Monoclonal Antibody
Product Data Sheet**

Catalog # 1617-1

Clone ID: Y238 Lot #: YC120604

Quantity: 100 µl

Type: Rabbit Monoclonal IgG

Species Cross-reactivity: Human Mouse Rat

Applications: WB IHC ICC Flow Cytometry IP

Molecular Wt.: 50-55 kDa

UniProt ID: O00141

Background: Serum and glucocorticoid-regulated kinase (SGK-1) is a 50kDa Serine/Threonine kinase that plays a role in the regulation of epithelial Na⁺ transport. Two additional SGK isoforms have been identified (SGK2 and SGK3). SGK is regulated by phosphorylation at Thr256 and Ser422 by the phosphatidyl-dependent protein kinase -1 (PDK1) and PDK-2 respectively (1-2). Nedd4-2 regulates SGK activity by catalyzing its ubiquitination and degradation. SGK also regulates the binding of Nedd4-2 to the epithelial Na⁺ channel (ENaC) protein by phosphorylating Nedd4-2 which helps increase Na⁺ transport (4). While environmental stresses increases its expression, SGK is known to play a role in promoting cell survival, proliferation and differentiation (5).

Specificity: A synthetic peptide corresponding to residues of human SGK was used as an immunogen.

Storage Conditions: Store at -20 °C. Buffer: 50 mM Tris-Glycine (pH 7.4), 0.15 M NaCl, 40% Glycerol, 0.01% sodium azide and 0.5% BSA. Stable for 12 months from date of receipt.

Recommended Dilutions:

WB: 1: 500

IHC: 1: 50

Flow Cytometry: 1:30

IP: 1: 50

Background References:

1. Kobayashi, T, Deak M, Morrice N, and Cohen P. *Biochem J* 344: 189-197, 1999
2. Liu, D, Yang X, and Songyang Z. *Curr Biol* 10: 1233-1236, 2000
3. Ruifeng Zhou and Peter M. Snyder *J. Biol. Chem.*, Vol. 280, Issue 6, 4518-4523, February 11, 2005
4. Debonneville et al (2001) *EMBO J.* 20, 7052-7059
5. Leong, M. L., Maiyar, A. C., Kim, B., O'Keeffe, B. A., and Firestone, G. L. (2003) *J. Biol. Chem.* 278, 5871-5882

Product QC'd by:

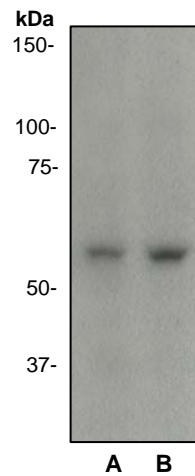


Fig 1. Western blot analysis of anti-SGK RabMab (cat. #1617-1) 1:500 dilution
A- A431
B- NIH3T3

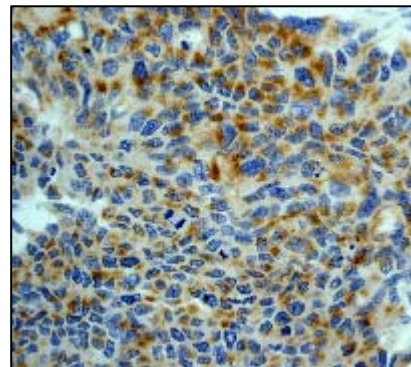


Fig 2. Immunohistochemical analysis of paraffin-embedded human kidney carcinoma using anti-SGK RabMab (cat. # 1617-1).

For research use only. Not for use in diagnostic or therapeutic applications.

This product was manufactured under US Patents No. 5,675,063 and 5,599,681. For a complete list of protocols and available related products, please visit www.epitomics.com.