

**Rho (N-term) Rabbit Monoclonal Antibody
Product Data Sheet**

Catalog # 1600-1

Clone ID: Y486 **Lot #:** YC121601
Quantity: 100 µl
Type: Rabbit Monoclonal IgG
Species Cross-reactivity: + Human + Mouse + Rat
Applications: + WB + IHC + ICC + Flow Cytometry + IP
Molecular Wt.: 22 kDa
UniProt ID: P61586

Background: Rho belongs to the Ras super family of low molecular weight GTPases. Fifteen Rho proteins have already been characterized and divided into three sub-families; the first includes Rho (A, B, C), the second, Rnd 1-3 and the third which includes Rac 1-3, RhoG, Cdc42Hs, Rho/TTF, TC10 and Chp (1-2). Rho acts as a molecular switch which turns on or off various intracellular signaling pathways such as ACK, PAKs, MEKKs ROCK (3). Rho is active when bound to GTP and inactive when bound to GDP (4). It is also known to participate in many physiological activities including cell migration, adhesion, cytokinesis, proliferation, differentiation and apoptosis and to a greater extent cell transformation (5).

Specificity: A synthetic peptide corresponding to residues in the N-term of human Rho was used as immunogen. The antibody is predicted to detect RhoA, RhoB and RhoC based on sequence analysis.

Storage Conditions: Store at -20 °C. Buffer: 50 mM Tris-Glycine (pH 7.4), 0.15 M NaCl, 40% Glycerol, 0.01% sodium azide and 0.05% BSA. Stable for 12 months from date of receipt.

Recommended Dilutions:

WB: 1:500 – 2,000
IHC: 1:50-100
ICC: 1:100-250

Background References:

1. Murphy et al. Nature. 384:427-432
2. Yeramian P, Chardin P, Madaule P, Tavittian A. Nucleic Acids Res. 1987 Feb 25;15(4):1869.
3. Maekawa et al. Science 285: 895-898, 1999.
4. Boguski, M.S., and F. McCormick. 1993. Nature. 366:643-654
5. Khosravi-Far, R., P.A. Solski, G.J. Clark, M.S. Kinch, and C.J. Der. 1995. Mol. Cell. Biol. 15:6443-6453.

Product QC'd by: _____

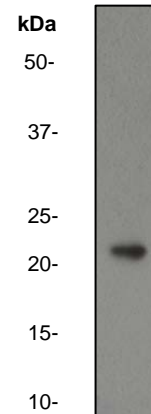


Fig 1. Western blot analysis on PC12 cell lysate using anti-Rho RabMAb (cat. # 1600-1), dilution 1:2,000.

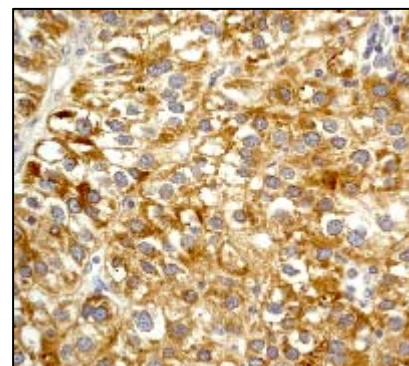


Fig 2. Immunohistochemical analysis of paraffin-embedded human hepatocellular carcinoma using anti-Rho RabMAb (cat. # 1600-1).

For research use only. Not for use in diagnostic or therapeutic applications.

This product was manufactured under U.S. Patent No. 5,675,063. For a complete list of protocols and available related products, please visit www.epitomics.com.

Epitomics, Inc., 863 Mitten Road, Suite 103 Burlingame, California 94010-1303

Rev. B/0809/SML