

**PLAP Rabbit Monoclonal Antibody
Product Data Sheet**

Catalog # 1566-1

Clone ID: Y102 Lot #: YC110704
Quantity: 100 µl
Type: Rabbit Monoclonal IgG
Species Cross-reactivity: Human Mouse Rat
Applications: WB IHC ICC Flow Cytometry IP
Molecular Wt.: 81 kDa
UniProt ID: Q9Y263

Background: Phospholipase A2 activator protein (PLAP), activates PLA2 (phospholipase A2 enzyme) and is an important mediator of eicosanoid generation. Also known as a pro-inflammatory agent, PLAP has been found in inflamed tissues and synovial fluid from patients with rheumatoid arthritis. As such, it is believed to play an important role in the regulation of inflammatory diseases. The formation of PLAP can be stimulated by IL-1 beta and TNF-alpha (1-2).

Specificity: A synthetic peptide corresponding to residues near the N-term of human PLAP was used as immunogen.

Storage Conditions: Store at -20 °C. Buffer: 50 mM Tris-Glycine (pH 7.4), 0.15 M NaCl, 40% Glycerol, 0.01% sodium azide and 0.05% BSA. Stable for 12 months from date of receipt.

Recommended Dilutions:

WB: 1:1,000
IHC: 1:50-100
ICC: 1:50

Background References:

1. Clark, M. A., T. M. Conway, R. G. L. Shorr, and S. T. Crooke. 1987. J. Biol. Chem. 262:4402-4406.
2. Chopra, A. K.; Ribardo, D. A.; Wood, T. G.; Prusak, D. J.; Xu, X.-J.; Peterson, J. W. : Biochim. Biophys. Acta 1444: 125-130, 1999.

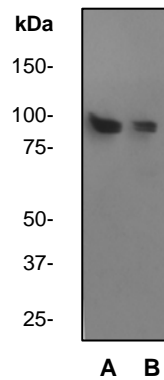


Fig 1. Western blot analysis of anti-PLAP RabMAb (cat. #1566-1), 1:1,000 dilution. A-MCF-7 B-K562

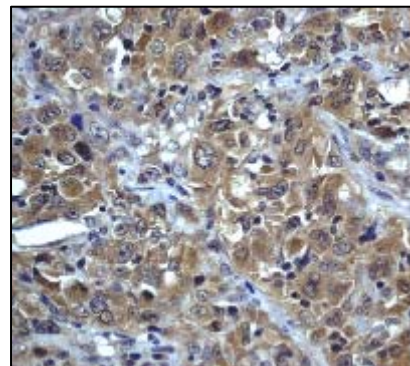


Fig 2. Immunohistochemical analysis of paraffin-embedded human lung metastatic cancer using anti-PLAP RabMAb (cat. # 1566-1).

Product QC'd by: 

For research use only. Not for use in diagnostic or therapeutic applications.

This product was manufactured under US Patents No. 5,675,063 and 5,599,681. For a complete list of protocols and available related products, please visit www.epitomics.com.