

**c-Jun Phospho (pS63) Rabbit Monoclonal Antibody
Product Data Sheet**

Catalog # 1527-1

Clone ID: Y172 **Lot #:** Please refer to the vial
Quantity: 100 µl
Type: Rabbit Monoclonal IgG
Species Cross-reactivity: + Human + Mouse + Rat
Applications: + WB + IHC + ICC + Flow Cytometry + IP
Molecular Wt.: 48 kDa
UniProt ID: P05412

Background: c-Jun is a component of the transcription factor AP-1 (1). The transcriptional activity of c-Jun is regulated by phosphorylation at serines 63 and 73 (1,2). Extracellular signals, including growth factors, transforming oncoproteins and UV light, stimulate phosphorylation of c-Jun at Ser63/73 and activate c-Jun-dependent transcription (3,4).

Specificity: A synthetic phospho-peptide corresponding to residues surrounding Ser63 of human c-Jun was used as immunogen. The antibody only detects c-Jun phosphorylated on Serine 63. Predicted to cross-react with bovine, based on sequence homology.

Storage Conditions: Store at -20 °C. Buffer: 50 mM Tris-Glycine (pH 7.4), 0.15 M NaCl, 40% Glycerol, 0.01% sodium azide and 0.05% BSA. Stable for 12 months from date of receipt.

Recommended Dilutions:

WB: 1:500-10,000
IHC: 1:50-100
ICC: 1:100-200
IP: 1:50

Background References:

1. Bohmann, D., et al. Human proto-oncogene c-jun encodes a DNA binding protein with structural and functional properties of transcription factor AP-1. *Science* 238: 1386–92 (1987).
2. Smeal, T., et al. Oncogenic and transcriptional cooperation with Ha-Ras requires phosphorylation of c-Jun on serines 63 and 73. *Nature* 354: 494–496 (1991).
3. Derijard, B., et al. JNK1: a protein kinase stimulated by UV light and Ha-Ras that binds and phosphorylates the c-Jun activation domain. *Cell* 76: 1025–1037 (1994).
4. Kyriakis, J.M., et al. The stress-activated protein kinase subfamily of c-Jun kinases. *Nature* 369: 156–160 (1994).

Product QC'd by: _____



For research use only. Not for use in diagnostic or therapeutic applications.

This product was manufactured under U.S. Patent No. 5,675,063. For a complete list of protocols and available related products, please visit www.epitomics.com.

Epitomics, Inc., 863 Mitten Road, Suite 103 Burlingame, California 94010-1303

Rev. C/1208/SML

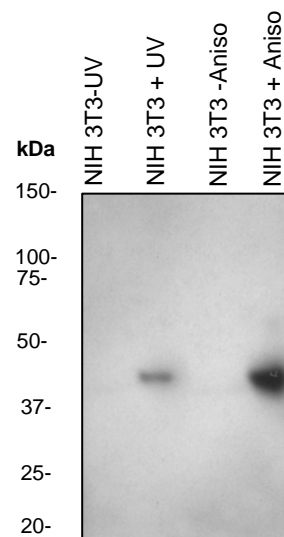


Fig 1. Western blot analysis on NIH 3T3 cell lysate using anti-Phospho-c-Jun (pS63) RabMAb (cat # 1527-1), dilution 1:10,000. Cells were either untreated or treated with UV or Anisomycin.

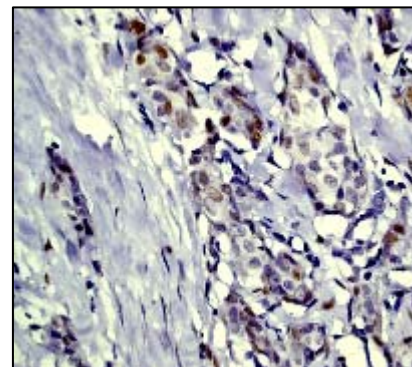


Fig 2. Immunohistochemical analysis of paraffin-embedded human breast carcinoma using anti- Phospho-c-Jun (pS63) RabMAb (catalog #1527-1).