

**PP2A Rabbit Monoclonal Antibody
Product Data Sheet**

Catalog #1512-1

Clone ID: Y119 **Lot #:** YC081504
Quantity: 100 µl
Type: Rabbit Monoclonal IgG
Species Cross-reactivity: + Human + Mouse + Rat
Applications: + WB + IHC + ICC + Flow Cytometry + IP
Molecular Wt.: 36 kDa
UniProt ID: P67775

Background: Protein phosphatase type 2A (PP2A) is a protein serine/threonine phosphatase that controls fundamental cellular processes, including transcription, translation, metabolism, cell growth, apoptosis, and varied other signal transduction pathways (1-3). PP2A is comprised of a core enzyme, which is made up of catalytic C and regulatory A (PR65) subunits, and a secondary regulatory B subunit. This B subunit contains four different protein families. In response to EGF or insulin, it has been shown that Src phosphorylates PP2A at Tyr307, thereby inactivating PP2A (4).

Specificity: A synthetic peptide corresponding to residues near C-terminus of human PP2A was used as immunogen. This antibody detects both alpha and beta isoforms of PP2A.

Storage Conditions: Store at -20 °C. Buffer: 50 mM Tris-Glycine (pH 7.4), 0.15 M NaCl, 40% Glycerol, 0.01% sodium azide and 0.05% BSA. Stable for 12 months from date of receipt.

Recommended Dilutions:

WB: 1:5,000-10,000
IHC: 1; 250-500
ICC: 1:50
IP: 1:100

Background References:

1. Janssens, V. and J. Goris. Protein phosphatase 2A: a highly regulated family of serine/threonine phosphatases implicated in cell growth and signalling. *Biochem. J.* 353: 417-439 (2001).
2. Zabrocki, P., et al. Protein phosphatase 2A on track for nutrient-induced signalling in yeast. *Mol. Microbiol.* 43: 835-842 (2002).
3. Milward, T.A., et al. Regulation of protein kinase cascades by protein phosphatase 2A. *Trends Biochem. Sci.* 24: 186-191 (1999).
4. Chen, J., et al. Regulation of protein serine-threonine phosphatase type-2A by tyrosine phosphorylation. *Science* 257: 1261-1264 (1992).

Product QC'd by: _____



kDa
250-
150-
100-
75-
50-
37-
25-
20-
15-



Fig 1. Western blot analysis on T47-D cell lysate using anti-PP2A RabMAb (catalog #1512-1), dilution 1:10,000.

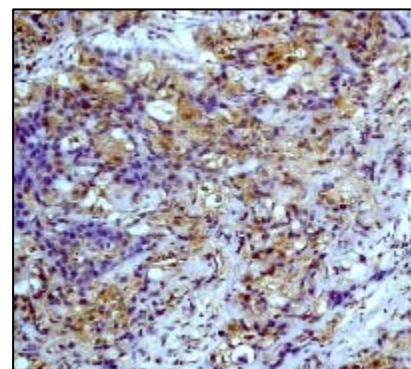


Fig 2. Immunohistochemical analysis of paraffin-embedded human breast carcinoma using anti-PP2A RabMAb (catalog #1512-1).

For research use only. Not for use in diagnostic or therapeutic applications.

This product was manufactured under U.S. Patent No. 5,675,063. For a complete list of protocols and available related products, please visit www.epitomics.com.

Epitomics, Inc., 863 Mitten Road, Suite 103 Burlingame, California 94010-1303

Rev. A/01-05/JS