

**CREB Rabbit Monoclonal Antibody  
Product Data Sheet**

**Catalog # 1496-1**

**Clone ID:** E306      **Lot #:** C08024  
**Quantity:** 100 µl  
**Type:** Rabbit Monoclonal IgG  
**Species Cross-reactivity:** + Human + Mouse - Rat  
**Applications:** + WB + IHC + ICC + Flow Cytometry + IP  
**Molecular Wt.:** 40 kDa  
**UniProt ID:** P16220

**Background:** CREB is a transcription factor protein that binds the cAMP response element (CRE), thereby stimulating transcription of this sequence. CREB plays a role in propagating numerous extracellular signals to the nucleus (1-3). CREB is activated by phosphorylation at the Ser133 position by various signaling pathways, and some of the kinases involved in phosphorylating CREB at Ser133 are p90RSK, MSK, CaMKIV and MAPKAPK-2 (1-3).

**Specificity:** A synthetic peptide corresponding to residues before DNA binding motif of human CREB was used as immunogen. This antibody can also recognize the splice isoform of CREB. Predicted to cross-react with bovine based on sequence homology.

**Storage Conditions:** Store at -20 °C. Buffer: 50 mM Tris-Glycine (pH 7.4), 0.15 M NaCl, 40% Glycerol, 0.01% sodium azide and 0.05% BSA. Stable for 12 months from date of receipt.

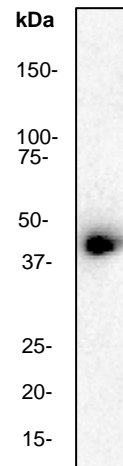
**Recommended Dilutions:**

WB: 1:500-1,000  
IHC: 1:250-500  
ICC: 1:250-500  
Flow Cytometry: 1:40  
IP: 1:80

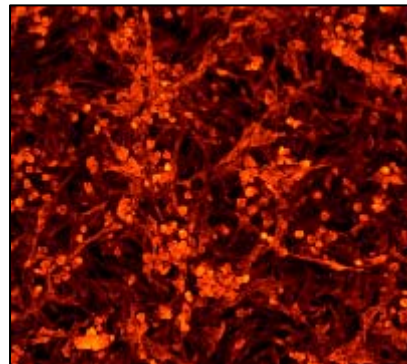
**Background References:**

1. Sheng, M., et al. CREB: a Ca(2+)-regulated transcription factor phosphorylated by calmodulin-dependent kinases. *Science* 252: 1427-1430 (1991).
2. Xing, J., et al. Coupling of the RAS-MAPK pathway to gene activation by RSK2, a growth factor-regulated CREB kinase. *Science* 273: 959-963 (1996).
3. Xing, J., et al. Nerve growth factor activates extracellular signal-regulated kinase and p38 mitogen-activated protein kinase pathways to stimulate CREB serine 133 phosphorylation. *Mol. Cell Biol.* 18: 1946-55 (1998).

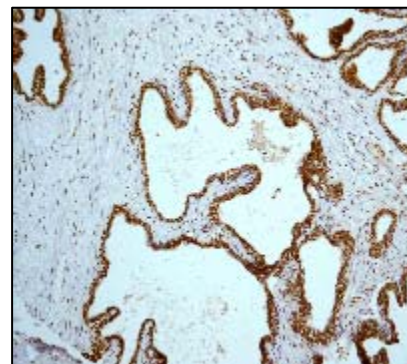
Product QC'd by: \_\_\_\_\_



**Fig 1.** Western blot analysis on A431 cell lysate using anti-CREB RabMAb (catalog #1496-1), dilution 1:1,000.



**Fig 2.** Immunofluorescent staining of PC-12 cells using anti-CREB RabMAb (catalog #1496-1).



**Fig 3.** Immunohistochemical analysis of paraffin-embedded prostate carcinoma using anti-CREB RabMAb (catalog #1496-1).

**For research use only. Not for use in diagnostic or therapeutic applications.**

*This product was manufactured under U.S. Patent No. 5,675,063. For a complete list of protocols and available related products, please visit [www.epitomics.com](http://www.epitomics.com).*