

CCR7/CKR7 (C-term) Rabbit Monoclonal Antibody
Product Data Sheet

Catalog # 1471-1

Clone ID: E271 Lot #: C06084
Quantity: 100 µl
Type: Rabbit Monoclonal IgG
Species Cross-reactivity: Human Mouse Rat
Applications: WB IHC ICC Flow Cytometry IP
Molecular Wt.: 50 kDa
UniProt ID: P32248

Background: CCR7, or C-C chemokine receptor type 7, is a G protein-coupled, seven-transmembrane domain receptor protein. Originally identified as the EBV-induced gene-1 (1), CCR7 was later found to be the receptor for the chemokines CCL21 (SLC, 6CKine, Exodus-2) (3) and CCL19 (MIP-3β, Exodus-3, ELC) (4). CCR7 is expressed in lymphoid tissues and activated B and T lymphocytes (2). It is up-regulated in B cells infected with Epstein-Barr virus and T cells infected with herpesvirus 6 or 7 (4).

Specificity: A synthetic peptide corresponding to residues near C-terminus of human CKR7 was used as immunogen. The antibody does not cross-react with other G-protein coupled receptor 1 family members. Predicted to cross-react with bovine, based on sequence homology.

Storage Conditions: Store at -20 °C. Buffer: 50 mM Tris-Glycine (pH 7.4), 0.15 M NaCl, 40% Glycerol, 0.01% sodium azide and 0.05% BSA. Stable for 12 months from date of receipt.

Recommended Dilutions:

WB: 1:1,000
IHC: 1:250
ICC: 1:250
Flow Cytometry: 1:20

Background References:

1. Schweickart, V. L., et al. Cloning of human and mouse EB11, a lymphoid-specific G-protein-coupled receptor encoded on human chromosome 17q12-q21.2. *Genomics*. 23: 643–50 (1994).
2. Birkenbach, M., et al. Epstein-Barr virus-induced genes: first lymphocyte-specific G protein-coupled peptide receptors. *J. Virol.* 67: 2209–20 (1993).
3. Yoshida, R., et al. Secondary lymphoid-tissue chemokine is a functional ligand for the CC chemokine receptor CCR7. *J. Biol. Chem.* 273: 7118–22 (1998).
4. Yoshida, R., et al. Molecular cloning of a novel human CC chemokine EB11-ligand chemokine that is a specific functional ligand for EB11, CCR7. *J. Biol. Chem.* 272: 13803–9 (1997).

Product QC'd by: _____

kDa

100-
75-
50-
37-
25-
20-
15-



Fig 1. Western blot analysis on Daudi cell lysate anti-CCR7 (C-term) RabMAb (catalog #1471-1), dilution 1:1,000.

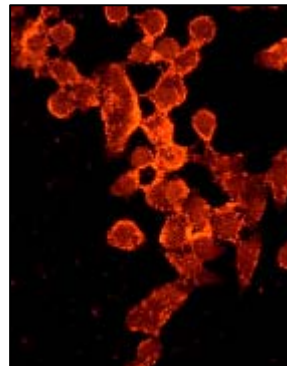


Fig 2. Immunofluorescent staining of A431 cells using anti-CCR7 (C-term) RabMAb (catalog #1471-1).

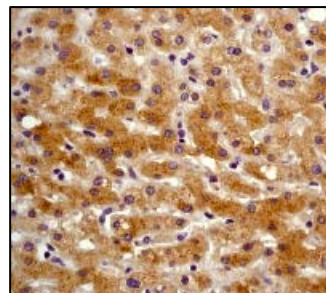


Fig 3. Immunohistochemical analysis of paraffin-embedded normal liver tissue using anti-CCR7 (C-term) RabMAb (catalog #1471-1).

For research use only. Not for use in diagnostic or therapeutic applications.

This product was manufactured under U.S. Patent No. 5,675,063. For a complete list of protocols and available related products, please visit www.epitomics.com.

Epitomics, Inc., 863 Mitten Road, Suite 103 Burlingame, California 94010-1303

Rev. A/01-05/JS