

**Plectin Rabbit Monoclonal Antibody
Product Data Sheet**

Catalog #1399-1

Clone ID: E398P Lot #: C031802
Quantity: 100 µl
Type: Rabbit Monoclonal IgG
Species Cross-reactivity: Human Mouse Rat
Applications: WB IHC n/d ICC Flow Cytometry IP
Molecular Wt.: 500 kDa
UniProt ID: Q15149

Background: Plectin, a 500-kDa intermediate filament binding protein, is localized to the cytoplasm and acts to both stabilize and give strength to cells via cross-linking (1). Plectin cross-links intermediate filaments to microtubules and microfilaments, and anchors intermediate filaments to the plasma and nuclear membranes (2,3). Plectin binds many proteins, including actin, vimentin, and Lamin B. Phosphorylation by PKA or PKC results in decreased binding to Lamin B, and phosphorylation by PKA enhances the plectin-vimentin interactions (4).

Specificity: A recombinant fragment comprising the C-terminal 220 amino acids of plectin was used as immunogen.

Storage Conditions: Store at -20 °C. Buffer: 50 mM Tris-Glycine (pH 7.4), 0.15 M NaCl, 40% Glycerol, 0.01% sodium azide and 0.05% BSA. Stable for 12 months from date of receipt.

Recommended Dilutions:

WB: 1:5,000
IHC: 1:250
IP: 40

Background References:

1. Liu, C.G., et al. Human plectin: organization of the gene, sequence analysis, and chromosome localization (8q24). *Proc Natl Acad Sci U S A*. 93: 4278–83 (1996).
2. Wiche, G. Role of plectin in cytoskeleton organization and dynamics. *J. Cell. Sci.* 111: 2477–2486 (1998).
3. Ruhrberg, C. and F.M. Watt. The plakin family: versatile organizers of cytoskeletal architecture. *Curr. Opin. Genet. Dev.* 7: 392–397 (1997).
4. Foisner, R., et al. Protein kinase A and protein kinase C-regulated interaction of plectin with lamin B and vimentin. *Proc. Natl. Acad. Sci. USA* 88: 3812-3816 (1991).

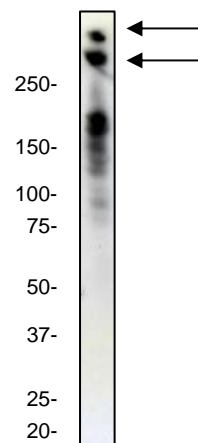


Fig 1. Western blot analysis on Jurkat cell lysate using anti-Plectin RabMAb (catalog #1399-1), dilution 1:5,000.

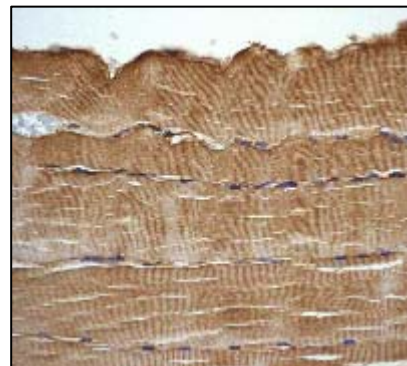


Fig 2. Immunohistochemical staining of paraffin-embedded human skeletal muscle using anti-Plectin RabMAb (catalog #1399-1).

Product QC'd by: _____

For research use only. Not for use in diagnostic or therapeutic applications.

This product was manufactured under U.S. Patent No. 5,675,063. For a complete list of protocols and available related products, please visit www.epitomics.com.

Epitomics, Inc., 863 Mitten Road, Suite 103 Burlingame, California 94010-1303

Rev. A/01-05/JS