

**Elk-1 (C-term) Rabbit Monoclonal Antibody  
Product Data Sheet**

**Catalog #1277-1**

**Clone ID:** E277      **Lot #:** C052511  
**Quantity:** 100 µl  
**Type:** Rabbit Monoclonal IgG  
**Species Cross-reactivity:**  Human  Mouse  Rat  
**Applications:**  WB  IHC  ICC  Flow Cytometry  IP  
**Molecular Wt.:** 62 kDa  
**UniProt ID:** P19419

**Background:** Elk-1 is a transcription factor that is part of the ets oncogene superfamily (1). Elk-1 forms a ternary complex with the serum response factors, SRE and SRF, mediating gene activity in response to serum and growth factors (2). Activation by several mitogen-activated protein kinases (Erk1 and Erk2) mediates the immediate early responses of the c-fos promoter to growth factors and other stimuli (3,4). Serines 383 and 389 in the C-terminal region are the preferred sites for phosphorylation-induced activation.

**Specificity:** A synthetic peptide corresponding to residues in C-terminus of human ELK-1 was used as immunogen. The antibody does not cross-react with other ETS family members.

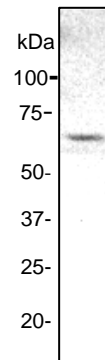
**Storage Conditions:** Store at -20 °C. Buffer: 50 mM Tris-Glycine (pH 7.4), 0.15 M NaCl, 40% Glycerol, 0.01% sodium azide and 0.05% BSA. Stable for 12 months from date of receipt.

**Recommended Dilutions:**

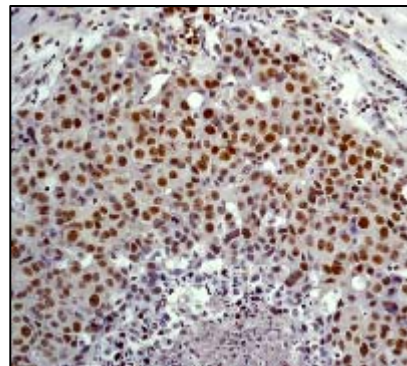
WB: 1:500  
IHC: 1:50  
ICC: 1:100  
IP: 1:80

**Background References:**

1. Rao, V.N., et al. elk, tissue-specific ets-related genes on chromosomes X and 14 near translocation breakpoints. *Science* 244: 66–70 (1989).
2. Marais, R., et al. The SRF accessory protein Elk-1 contains a growth factor-regulated transcriptional activation domain. *Cell* 73: 381–393 (1993).
3. Harindranath, N., et al. The human elk-1 gene family: the functional gene and two processed pseudogenes embedded in the IgH locus. *Gene* 221: 215–24 (1998).
4. Gille, H., et al. ERK phosphorylation potentiates Elk-1-mediated ternary complex formation and transactivation. *EMBO J.* 14: 951–62 (1995).



**Fig 1.** Western blot analysis on A431 cell lysate using anti-Elk-1 (C-term) RabMAb (catalog #1277-1), dilution 1:500.



**Fig 2.** Immunohistochemical analysis of paraffin-embedded human breast carcinoma using anti-ELK1 RabMAb (catalog #1277-1).

Product QC'd by: \_\_\_\_\_

**For research use only. Not for use in diagnostic or therapeutic applications.**

*This product was manufactured under U.S. Patent No. 5,675,063. For a complete list of protocols and available related products, please visit [www.epitomics.com](http://www.epitomics.com).*