

**Pro-Caspase-9 Rabbit Monoclonal Antibody  
Product Data Sheet**

**Catalog #1084-1**

**Clone ID:** E84      **Lot #:** Please refer to the vial  
**Quantity:** 100 µl  
**Type:** Rabbit Monoclonal IgG  
**Species Cross-reactivity:**  Human  Mouse  Rat  
**Applications:**  WB  IHC  ICC  Flow Cytometry  IP  
**Molecular Wt.:** 46 kDa  
**UniProt ID:** P55211

**Background:** Caspase-9 (ICE-LAP6, Mch-6, Apaf-3) is a member of the cysteine aspartic acid protease, or caspase, family. Pro-Caspase-9 exists as a 46 kDa isomer that is cleaved by apoptotic stimulation, and functions as the major initiator caspase in programmed cell death, or apoptosis (1-4). Upon stimulation, cytochrome c is released from mitochondria, and associates with the Pro-Caspase-9/Apaf 1 complex. This complex in turn activates Pro-Caspase-9 by cleaving it into an active 35 kDa fragment and a small 10 kDa fragment (1,2). Activated Caspase-9 cleaves Caspase-3 as well as poly (ADP-ribose) polymerase (PARP) to initiate a caspase cascade and apoptosis (3,4).

**Specificity:** A synthetic peptide corresponding to residues near N-terminus of human Caspase-9 was used as immunogen. This antibody only recognises the Pro form of Caspase-9 (46kDa).

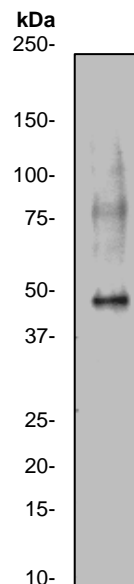
**Storage Conditions:** Store at -20 °C. Buffer: 50 mM Tris-Glycine (pH 7.4), 0.15 M NaCl, 40% Glycerol, 0.01% sodium azide and 0.05% BSA. Stable for 12 months from date of receipt.

**Recommended Dilutions:**

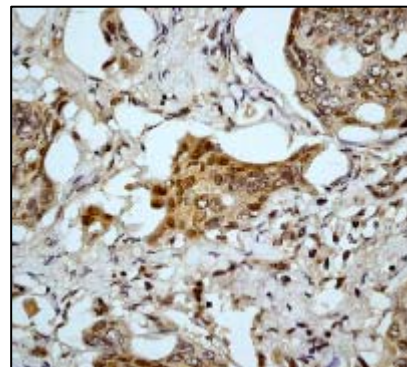
WB: 1:500-2000  
IHC: 1:25  
Flow Cytometry: 1:50

**Background References:**

1. Kuida, K. et al. Reduced Apoptosis and Cytochrome c-Mediated Caspase Activation in Mice Lacking Caspase 9. *Cell* 94: 325-337 (1998).
2. Li, P. et al. Cytochrome c and dATP-Dependent Formation of Apaf-1/Caspase-9 Complex Initiates an Apoptotic Protease Cascade. *Cell* 91: 479-489 (1997).
3. Duan, H. et al. ICE-LAP6, a novel member of the ICE/Ced-3 gene family, is activated by the cytotoxic T cell protease granzyme B. *J. Biol. Chem.* 271: 16720-24 (1996).
4. Srinivasula, S.M. et al. The Ced-3/interleukin 1beta converting enzyme-like homolog Mch6 and the lamin-cleaving enzyme Mch2alpha are substrates for the apoptotic mediator CPP32. *J. Biol. Chem.* 271: 27099-27106 (1996).



**Fig 1.** Western blot analysis on Jurkat cell lysate using anti-Pro-Caspase-9 RabMAb (catalog #1084-1), 1:2,000 dilution.



**Fig 2.** Immunohistochemical analysis of human skin using anti-Pro-Caspase-9 RabMAb (catalog #1084-1).

Product QC'd by: \_\_\_\_\_

**For research use only. Not for use in diagnostic or therapeutic applications.**

*This product was manufactured under U.S. Patent No. 5,675,063.*

*For a complete list of protocols and available related products, please visit [www.epitomics.com](http://www.epitomics.com).*

**Epitomics, Inc., 863 Mitten Road, Suite 103 Burlingame, California 94010-1303**

Rev. B/0707/SML